

For Research Use Only

C10orf68 Polyclonal antibody

Catalog Number: 24975-1-AP



Basic Information

Catalog Number:

24975-1-AP

Concentration:

750 ug/ml

Source:

Rabbit

Isotype:

IgG

Immunogen Catalog Number:

AG21682

GenBank Accession Number:

BC125091

GeneID (NCBI):

79741

UNIPROT ID:

Q96M83

Full Name:

chromosome 10 open reading frame
68

Calculated MW:

628 aa, 71 kDa

Observed MW:

65 kDa

Purification Method:

Antigen affinity purification

Recommended Dilutions:

WB 1:500-1:1000

IHC 1:50-1:500

IF/ICC 1:50-1:500

Applications

Tested Applications:

WB, IHC, IF/ICC, ELISA

Species Specificity:

human, monkey

**Note-IHC: suggested antigen retrieval with
TE buffer pH 9.0; (*) Alternatively, antigen
retrieval may be performed with citrate
buffer pH 6.0**

Positive Controls:

WB : A549 cells, COS-7 cells

IHC : human kidney tissue,

IF/ICC : HEK-293 cells,

Background Information

chromosome 10 open reading frame 68 (C10orf68) is a 628 amino-acid protein, which may have three isoforms. The function of C10orf68 is still non-known and needs to be further studied.

Storage

Storage:

Store at -20°C. Stable for one year after shipment.

Storage Buffer:

PBS with 0.02% sodium azide and 50% glycerol pH 7.3.

Aliquoting is unnecessary for -20°C storage

For technical support and original validation data for this product please contact:

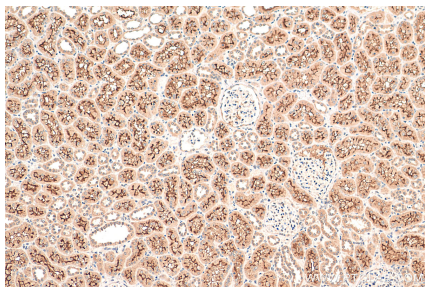
T: 4006900926

E: Proteintech-CN@ptglab.com

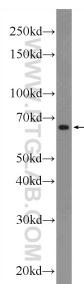
W: ptgcn.com

This product is exclusively available under Proteintech Group brand and is not available to purchase from any other manufacturer.

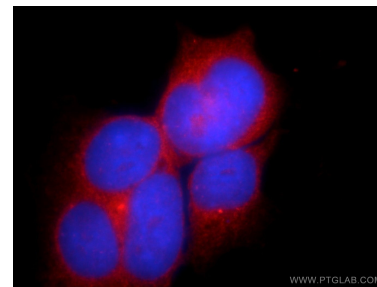
Selected Validation Data



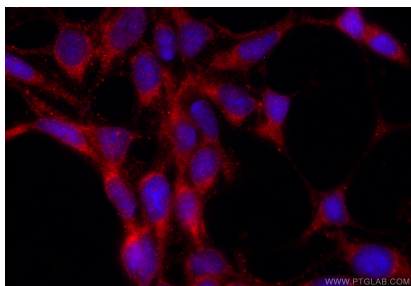
Immunohistochemical analysis of paraffin-embedded human kidney tissue slide using 24975-1-AP (C10orf68 antibody) at dilution of 1:200 (under 10x lens). Heat mediated antigen retrieval with Tris-EDTA buffer (pH 9.0).



A549 cells were subjected to SDS PAGE followed by western blot with 24975-1-AP (C10orf68 Antibody) at dilution of 1:600 incubated at room temperature for 1.5 hours.



Immunofluorescent analysis of HEK-293 cells using 24975-1-AP (C10orf68 antibody) at dilution of 1:25 and Rhodamine-Goat anti-Rabbit IgG.



Immunofluorescent analysis of (-20°C Ethanol) fixed HEK-293 cells using C10orf68 antibody (24975-1-AP) at dilution of 1:200 and CoraLite®594-Conjugated Goat Anti-Rabbit IgG(H+L) (SA00013-4).