

For Research Use Only

C10orf28 Polyclonal antibody, PBS Only

Catalog Number: 24967-1-PBS



Basic Information

Catalog Number:

24967-1-PBS

Size:

1 mg/ml

Source:

Rabbit

Isotype:

IgG

Immunogen Catalog Number:

AG21740

GenBank Accession Number:

BC098359

GeneID (NCBI):

27291

UNIPROT ID:

Q7Z5L2

Full Name:

chromosome 10 open reading frame

28

Calculated MW:

792 aa, 88 kDa

Observed MW:

110 kDa

Purification Method:

Antigen affinity purification

Applications

Tested Applications:

WB, IHC, IF/ICC, Indirect ELISA

Species Specificity:

human

Background Information

Storage

Storage:

Store at -80°C.

The product is shipped with ice packs. Upon receipt, store it immediately at -80°C

Storage Buffer:

PBS Only

For technical support and original validation data for this product please contact:

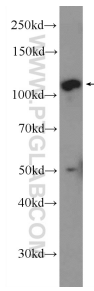
T: 4006900926

E: Proteintech-CN@ptglab.com

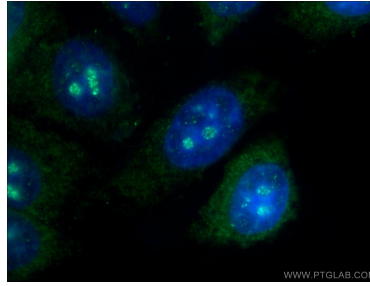
W: ptgcn.com

This product is exclusively available under Proteintech Group brand and is not available to purchase from any other manufacturer.

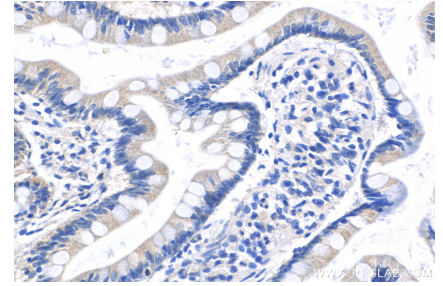
Selected Validation Data



A549 cells were subjected to SDS PAGE followed by western blot with 24967-1-AP (C10orf28 Antibody) at dilution of 1:300 incubated at room temperature for 1.5 hours. This data was developed using the same antibody clone with 24967-1-PBS in a different storage buffer formulation.



Immunofluorescent analysis of HepG2 cells using 24967-1-AP (C10orf28 antibody) at dilution of 1:25 and Alexa Fluor 488-conjugated AffiniPure Goat Anti-Rabbit IgG(H+L). This data was developed using the same antibody clone with 24967-1-PBS in a different storage buffer formulation.



Immunohistochemical analysis of paraffin-embedded human small intestine tissue slide using 24967-1-AP (C10orf28 antibody) at dilution of 1:200 (under 40x lens). This data was developed using the same antibody clone with 24967-1-PBS in a different storage buffer formulation.