

For Research Use Only

BEND2 Polyclonal antibody, PBS Only

Catalog Number: 24958-1-PBS



Basic Information

| | | |
|---|--|--|
| Catalog Number: 24958-1-PBS | GenBank Accession Number: BC096745 | Purification Method: Antigen affinity purification |
| Concentration: 1 mg/ml | GeneID (NCBI): 139105 | |
| Source: Rabbit | UNIPROT ID: Q8NDZO | |
| Isotype: IgG | Full Name: BEN domain containing 2 | |
| Immunogen Catalog Number: AG21152 | Calculated MW: 799 aa, 88 kDa | |
| | Observed MW: 130-140 kDa | |

Applications

Tested Applications:
WB, Indirect ELISA

Species Specificity:
human, mouse, rat

Background Information

BEND2 (BEN domain-containing protein 2) is a novel protein that is specifically expressed in spermatogenic cells around the time of meiotic initiation (PMID: 35613276). BEND2 interacted with a number of chromatin-associated proteins including ZMYM2, LSD1, CHD4, and ADNP- which are components of certain transcription-repressor complexes. In the testis, Bend2 expresses two protein isoforms: the 130 kDa protein corresponds to the full-length BEND2, which displays a slower electrophoretic mobility due to its unusual sequence/structure. The 75 kDa protein corresponds to a smaller version of BEND2 lacking the N-terminus, p80.

Storage

Storage:
Store at -80°C.
The product is shipped with ice packs. Upon receipt, store it immediately at -80°C

Storage Buffer:
PBS only, pH7.3

For technical support and original validation data for this product please contact:

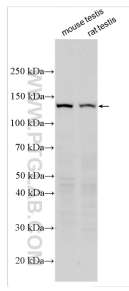
T: 4006900926

E: Proteintech-CN@ptglab.com

W: ptgcn.com

This product is exclusively available under Proteintech Group brand and is not available to purchase from any other manufacturer.

Selected Validation Data



Various lysates were subjected to SDS PAGE followed by western blot with 24958-1-AP (BEND2 antibody) at dilution of 1:500 incubated at room temperature for 1.5 hours. This data was developed using the same antibody clone with 24958-1-PBS in a different storage buffer formulation.