

For Research Use Only

# C6orf182 Polyclonal antibody, PBS Only

Catalog Number: 24957-1-PBS

Featured Product



## Basic Information

Catalog Number:

24957-1-PBS

Concentration:

1 mg/ml

Source:

Rabbit

Isotype:

IgG

Immunogen Catalog Number:

AG21054

GenBank Accession Number:

BC064365

GeneID (NCBI):

285753

UNIPROT ID:

Q8IYX8

Full Name:

chromosome 6 open reading frame

182

Calculated MW:

460 aa, 54 kDa

Observed MW:

55-65 kDa

Purification Method:

Antigen affinity purification

## Applications

Tested Applications:

WB, IF/ICC, Indirect ELISA

Species Specificity:

human, mouse, monkey

## Background Information

C6orf182 also named as Centrosomal protein of 57 kDa related protein is a 460 amino-acid protein, which belongs to translokin family. C6orf182 as centrosomal protein may be required for microtubule attachment to centrosomes and localizes in the cytoplasm. The function of C6orf182 need to be further studied.

## Storage

Storage:

Store at -80°C.

The product is shipped with ice packs. Upon receipt, store it immediately at -80°C

Storage Buffer:

PBS Only

For technical support and original validation data for this product please contact:

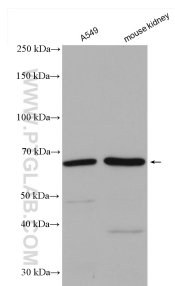
T: 4006900926

E: [Proteintech-CN@ptglab.com](mailto:Proteintech-CN@ptglab.com)

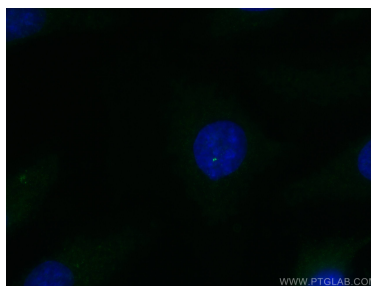
W: [ptgcn.com](http://ptgcn.com)

This product is exclusively available under Proteintech Group brand and is not available to purchase from any other manufacturer.

## Selected Validation Data



Various lysates were subjected to SDS PAGE followed by western blot with 24957-1-AP (C6orf182 antibody) at dilution of 1:600 incubated at room temperature for 1.5 hours. This data was developed using the same antibody clone with 24957-1-PBS in a different storage buffer formulation.



Immunofluorescent analysis of (-20°C Methanol) fixed HeLa cells using C6orf182 antibody (24957-1-AP) at dilution of 1:200 and CoraLite® 488-Conjugated AffiniPure Goat Anti-Rabbit IgG(H+L). This data was developed using the same antibody clone with 24957-1-PBS in a different storage buffer formulation.