

For Research Use Only

C6orf182 Polyclonal antibody

Catalog Number: 24957-1-AP **2 Publications**



Basic Information

Catalog Number: 24957-1-AP	GenBank Accession Number: BC064365	Purification Method: Antigen affinity purification
Size: 650 µg/ml	GeneID (NCBI): 285753	Recommended Dilutions: WB 1:500-1:1000 IF 1:50-1:500
Source: Rabbit	UNIPROT ID: Q8IYX8	
Isotype: IgG	Full Name: chromosome 6 open reading frame 182	
Immunogen Catalog Number: AG21054	Calculated MW: 460 aa, 54 kDa	
	Observed MW: 55-65 kDa	

Applications

Tested Applications: IF/ICC, WB, ELISA	Positive Controls: WB : A549 cells, mouse kidney tissue
Cited Applications: IF	IF : HeLa cells,
Species Specificity: human, mouse, monkey	
Cited Species: human	

Background Information

C6orf182 also named as Centrosomal protein of 57 kDa related protein is a 460 amino-acid protein, which belongs to translokin family. C6orf182 as centrosomal protein may be required for microtubule attachment to centrosomes and localizes in the cytoplasm. The function of C6orf182 need to be further studied.

Notable Publications

Author	Pubmed ID	Journal	Application
Tianyu Wu	36395215	Science	IF
Kei K Ito	33492359	J Cell Biol	IF

Storage

Storage:
Store at -20°C. Stable for one year after shipment.
Storage Buffer:
PBS with 0.02% sodium azide and 50% glycerol pH 7.3.
Aliquoting is unnecessary for -20°C storage

For technical support and original validation data for this product please contact:

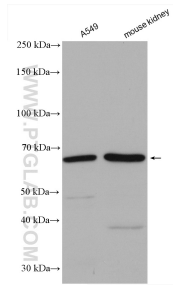
T: 4006900926

E: Proteintech-CN@ptglab.com

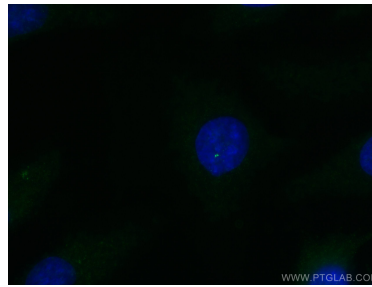
W: ptgcn.com

This product is exclusively available under Proteintech Group brand and is not available to purchase from any other manufacturer.

Selected Validation Data



Various lysates were subjected to SDS PAGE followed by western blot with 24957-1-AP (C6orf182 antibody) at dilution of 1:600 incubated at room temperature for 1.5 hours.



Immunofluorescent analysis of (-20°C Methanol) fixed HeLa cells using C6orf182 antibody (24957-1-AP) at dilution of 1:200 and CoraLite® 488-Conjugated AffiniPure Goat Anti-Rabbit IgG(H+L).