

For Research Use Only

ME2 Polyclonal antibody

Catalog Number: 24944-1-AP

Featured Product

4 Publications



Basic Information

Catalog Number:

24944-1-AP

Size:

1100 µg/ml

Source:

Rabbit

Isotype:

IgG

Immunogen Catalog Number:

AG20741

GenBank Accession Number:

BC000147

GeneID (NCBI):

4200

UNIPROT ID:

P23368

Full Name:

malic enzyme 2, NAD(+)-dependent, mitochondrial

Calculated MW:

65 kDa

Observed MW:

54 kDa, 65 kDa

Purification Method:

Antigen affinity purification

Recommended Dilutions:

WB 1:2000-1:16000

IP 0.5-4.0 µg for 1.0-3.0 mg of total protein lysate

IHC 1:100-1:400

Applications

Tested Applications:

IHC, IP, WB, ELISA

Cited Applications:

WB, IP

Species Specificity:

human

Cited Species:

human

Note-IHC: suggested antigen retrieval with TE buffer pH 9.0; (*) Alternatively, antigen retrieval may be performed with citrate buffer pH 6.0

Positive Controls:

WB: HL-60 cells, HeLa cells, Jurkat cells, K-562 cells

IP: HeLa cells,

IHC: human pancreas cancer tissue, human colon tissue

Background Information

ME2(malic enzyme 2) is also named as NAD-ME and belongs to the malic enzymes family. ME1, ME2 are important for NADPH production, lipogenesis and glutamine metabolism, but ME2 has a more profound effect. ME2 is a genome-coded mitochondrial enzyme that converts malate to pyruvate and is involved in neuronal synthesis of the neurotransmitter γ -aminobutyric acid (GABA)(PMID:15532013). This protein has 2 isoforms produced by alternative splicing with the MW of 65 kDa and 54 kDa.

Notable Publications

Author	Pubmed ID	Journal	Application
Linchong Sun	25793315	Cell Res	WB
Taiqi Chen	38263319	Nat Commun	WB,IP
Peng Teng	38007551	Cell Death Differ	WB

Storage

Storage:

Store at -20°C. Stable for one year after shipment.

Storage Buffer:

PBS with 0.02% sodium azide and 50% glycerol pH 7.3.

Aliquoting is unnecessary for -20°C storage

For technical support and original validation data for this product please contact:

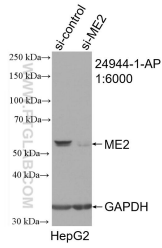
T: 4006900926

E: Proteintech-CN@ptglab.com

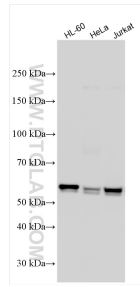
W: ptgcn.com

This product is exclusively available under Proteintech Group brand and is not available to purchase from any other manufacturer.

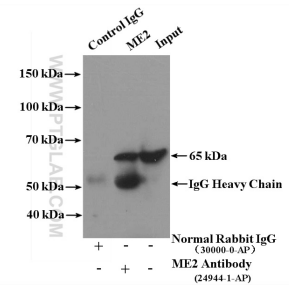
Selected Validation Data



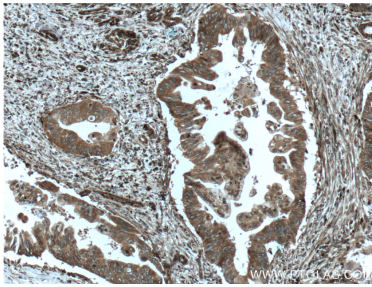
WB result of ME2 antibody (24944-1-AP; 1:6000; incubated at room temperature for 1.5 hours) with sh-Control and sh-ME2 transfected HepG2 cells.



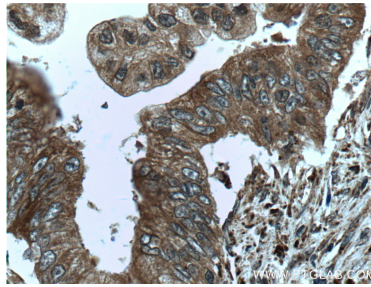
Various lysates were subjected to SDS PAGE followed by western blot with 24944-1-AP (ME2 antibody) at dilution of 1:8000 incubated at room temperature for 1.5 hours.



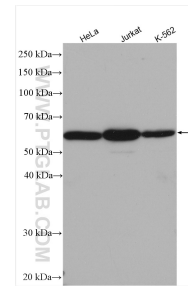
IP result of anti-ME2 (IP:24944-1-AP, 4ug; Detection:24944-1-AP 1:500) with HeLa cells lysate 3200ug.



Immunohistochemical analysis of paraffin-embedded human pancreas cancer tissue slide using 24944-1-AP (ME2 Antibody) at dilution of 1:200 (under 10x lens). Heat mediated antigen retrieval with Tris-EDTA buffer (pH 9.0).



Immunohistochemical analysis of paraffin-embedded human pancreas cancer tissue slide using 24944-1-AP (ME2 Antibody) at dilution of 1:200 (under 40x lens). Heat mediated antigen retrieval with Tris-EDTA buffer (pH 9.0).



Various lysates were subjected to SDS PAGE followed by western blot with 24944-1-AP (ME2 antibody) at dilution of 1:3000 incubated at room temperature for 1.5 hours.