

KDM4A Polyclonal antibody

Catalog Number: 24943-1-AP

Featured Product

2 Publications

Basic Information

Catalog Number:

24943-1-AP

Size:

450 µg/ml

Source:

Rabbit

Isotype:

IgG

Immunogen Catalog Number:

AG20747

GenBank Accession Number:

BC002558

GeneID (NCBI):

9682

UNIPROT ID:

O75164

Full Name:

lysine (K)-specific demethylase 4A

Calculated MW:

1064 aa, 121 kDa

Observed MW:

55 kDa

Purification Method:

Antigen affinity purification

Recommended Dilutions:

WB 1:200-1:1000

Applications

Tested Applications:

WB, ELISA

Cited Applications:

WB, ChIP

Species Specificity:

human, mouse

Cited Species:

human, mouse

Positive Controls:

WB: NIH/3T3 cells, MCF-7 cells

Background Information

KDM4A also named as JHDM3A, JMJD2, or KIAA0677 is a 1066 amino acid protein, which contains one JmjC domain, two Tudor domains and two PHD-type zinc fingers. KDM4A localizes in nucleus and belongs to the JHDM3 histone demethylase family. KDM4A is histone de-methylase that specifically demethylates Lys 9 and Lys 36 residues of Histone H3, thereby playing a central role in histone code. JMJD2A demethylation of lysine residues will generate formaldehyde and succinate. KDM4A also participates in transcriptional repression of ASCL2 and E2F-responsive promoters via the recruitment of histone deacetylases and NCOR1, respectively. JMJD2A is a ubiquitously expressed nuclear protein. KDM4A exists as two isoforms. The short isoform of KDM4A in which the N-terminal demethylase domains has been deleted. The molecular weight of short isoform is 55Da.

Notable Publications

Author	Pubmed ID	Journal	Application
Tiantian Zhao	35197855	Front Pharmacol	WB
Ming Kong	31014673	Biochem Biophys Res Commun	WB, ChIP

Storage

Storage:

Store at -20°C. Stable for one year after shipment.

Storage Buffer:

PBS with 0.02% sodium azide and 50% glycerol pH 7.3.

Aliquoting is unnecessary for -20°C storage

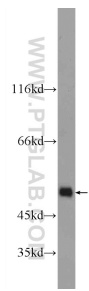
For technical support and original validation data for this product please contact:

T: 4006900926

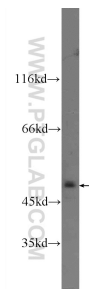
E: Proteintech-CN@ptglab.comW: ptgcn.com

This product is exclusively available under Proteintech Group brand and is not available to purchase from any other manufacturer.

Selected Validation Data



NIH/3T3 cells were subjected to SDS PAGE followed by western blot with 24943-1-AP (KDM4A Antibody) at dilution of 1:300 incubated at room temperature for 1.5 hours.



MCF-7 cells were subjected to SDS PAGE followed by western blot with 24943-1-AP (KDM4A Antibody) at dilution of 1:300 incubated at room temperature for 1.5 hours.