

For Research Use Only

RPL39L Polyclonal antibody

Catalog Number: 24940-1-AP



Basic Information

Catalog Number: 24940-1-AP	GenBank Accession Number: BC012328	Purification Method: Antigen affinity purification
Size: 600 µg/ml	GeneID (NCBI): 116832	Recommended Dilutions: WB 1:500-1:1000 IHC 1:20-1:200
Source: Rabbit	UNIPROT ID: Q96EH5	
Isotype: IgG	Full Name: ribosomal protein L39-like	
Immunogen Catalog Number: AG20923	Calculated MW: 51 aa, 6 kDa	
	Observed MW: 6 kDa	

Applications

Tested Applications: IHC, WB, ELISA	Positive Controls: WB : HL-60 cells, IHC : human testis tissue,
Species Specificity: human	
Note-IHC: suggested antigen retrieval with TE buffer pH 9.0; (*) Alternatively, antigen retrieval may be performed with citrate buffer pH 6.0	

Background Information

Storage

Storage:
Store at -20°C. Stable for one year after shipment.
Storage Buffer:
PBS with 0.02% sodium azide and 50% glycerol pH 7.3.
Aliquoting is unnecessary for -20°C storage

For technical support and original validation data for this product please contact:

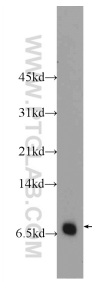
T: 4006900926

E: Proteintech-CN@ptglab.com

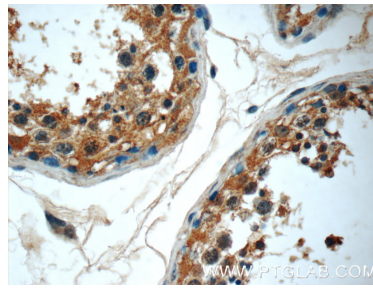
W: ptgcn.com

This product is exclusively available under Proteintech Group brand and is not available to purchase from any other manufacturer.

Selected Validation Data



HL-60 cells were subjected to SDS PAGE followed by western blot with 24940-1-AP (RPL39L Antibody) at dilution of 1:600 incubated at room temperature for 1.5 hours.



Immunohistochemical analysis of paraffin-embedded human testis tissue slide using 24940-1-AP (RPL39L Antibody) at dilution of 1:50 (under 40x lens).