

For Research Use Only

# SEC61 Alpha Polyclonal antibody, PBS Only

Catalog Number: 24935-1-PBS



## Basic Information

Catalog Number:

24935-1-PBS

Size:

1 mg/ml

Source:

Rabbit

Isotype:

IgG

Immunogen Catalog Number:

AG20779

GenBank Accession Number:

BC026179

GeneID (NCBI):

55176

UNIPROT ID:

Q9H9S3

Full Name:

Sec61 alpha 2 subunit (*S. cerevisiae*)

Calculated MW:

52 kDa

Observed MW:

52 kDa

Purification Method:

Antigen affinity purification

## Applications

Tested Applications:

WB, Indirect ELISA

Species Specificity:

human, mouse

## Background Information

The SEC61 complex is a major component of the endoplasmic reticulum (ER) translocation site (PMID: 7720858). This complex is composed of three subunits: SEC61alpha, SEC61beta and SEC61gamma. SEC61alpha is a polytopic integral membrane protein. It is a core component of the ER translocation complex, playing a crucial role in the insertion of secretory and membrane polypeptides into the ER (PMID: 9512475).

## Storage

Storage:

Store at -80°C.

**The product is shipped with ice packs. Upon receipt, store it immediately at -80°C**

Storage Buffer:

PBS Only

For technical support and original validation data for this product please contact:

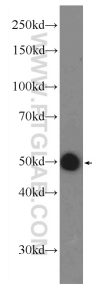
T: 4006900926

E: [Proteintech-CN@ptglab.com](mailto:Proteintech-CN@ptglab.com)

W: [ptgcn.com](http://ptgcn.com)

**This product is exclusively available under Proteintech Group brand and is not available to purchase from any other manufacturer.**

## Selected Validation Data



mouse brain tissue were subjected to SDS PAGE followed by western blot with 24935-1-AP (SEC61alpha antibody at dilution of 1:600 incubated at room temperature for 1.5 hours. This data was developed using the same antibody clone with 24935-1-PBS in a different storage buffer formulation.