

For Research Use Only

# SEC61 Alpha Polyclonal antibody

Catalog Number: 24935-1-AP **2 Publications**



## Basic Information

<b>Catalog Number:</b> 24935-1-AP	<b>GenBank Accession Number:</b> BC026179	<b>Purification Method:</b> Antigen affinity purification
<b>Size:</b> 500 ug/ml	<b>GeneID (NCBI):</b> 55176	<b>Recommended Dilutions:</b> WB 1:500-1:1000
<b>Source:</b> Rabbit	<b>UNIPROT ID:</b> Q9H9S3	
<b>Isotype:</b> IgG	<b>Full Name:</b> Sec61 alpha 2 subunit (S. cerevisiae)	
<b>Immunogen Catalog Number:</b> AG20779	<b>Calculated MW:</b> 52 kDa	
	<b>Observed MW:</b> 52 kDa	

## Applications

<b>Tested Applications:</b> WB, ELISA	<b>Positive Controls:</b> WB : mouse brain tissue, HEK-293 cells, U2OS cells, mouse liver tissue
<b>Cited Applications:</b> IF, CoIP	
<b>Species Specificity:</b> human, mouse	
<b>Cited Species:</b> human, rat	

## Background Information

The SEC61 complex is a major component of the endoplasmic reticulum (ER) translocation site (PMID: 7720858). This complex is composed of three subunits: SEC61alpha, SEC61beta and SEC61gamma. SEC61alpha is a polytopic integral membrane protein. It is a core component of the ER translocation complex, playing a crucial role in the insertion of secretory and membrane polypeptides into the ER (PMID: 9512475).

## Notable Publications

Author	Pubmed ID	Journal	Application
Yuan Wang	32524001	Sci Adv	IF
Angela L. Whittsette	35938049	iScience	CoIP

## Storage

**Storage:**  
Store at -20°C. Stable for one year after shipment.  
**Storage Buffer:**  
PBS with 0.02% sodium azide and 50% glycerol pH 7.3.  
**Aliquoting is unnecessary for -20°C storage**

For technical support and original validation data for this product please contact:

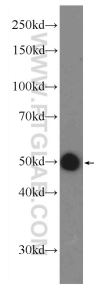
T: 4006900926

E: [Proteintech-CN@ptglab.com](mailto:Proteintech-CN@ptglab.com)

W: [ptgcn.com](http://ptgcn.com)

**This product is exclusively available under Proteintech Group brand and is not available to purchase from any other manufacturer.**

## Selected Validation Data



mouse brain tissue were subjected to SDS PAGE followed by western blot with 24935-1-AP (SEC61alpha antibody at dilution of 1:600 incubated at room temperature for 1.5 hours.