

SRBD1 Polyclonal antibody

Catalog Number: 24931-1-AP

Basic Information

Catalog Number:

24931-1-AP

Size:

1000 µg/ml

Source:

Rabbit

Isotype:

IgG

Immunogen Catalog Number:

AG21661

GenBank Accession Number:

BC032538

GeneID (NCBI):

55133

UNIPROT ID:

Q8N5C6

Full Name:

S1 RNA binding domain 1

Calculated MW:

995 aa, 112 kDa

Observed MW:

100-120 kDa

Purification Method:

Antigen affinity purification

Recommended Dilutions:

WB 1:1000-1:8000

IP 0.5-4.0 µg for 1.0-3.0 mg of total protein lysate

IHC 1:50-1:500

Applications

Tested Applications:

WB, IP, IHC, ELISA

Species Specificity:

human, mouse

Note-IHC: suggested antigen retrieval with TE buffer pH 9.0; (*) Alternatively, antigen retrieval may be performed with citrate buffer pH 6.0

Positive Controls:

WB : SH-SY5Y cells,

IP : mouse brain tissue,

IHC : human brain tissue,

Background Information

S1 RNA-binding domain-containing protein 1 (SRBD1) is a 995 amino acid protein, which contains one S1 motif domain. SRBD1 is a susceptibility gene for normal tension glaucoma (NTG) and may be involved in cell growth inhibition and apoptosis. Two isoforms of SRBD1 exist due to alternative splicing events, and the gene which encodes SRBD1 maps to human chromosome 2p21.

Storage

Storage:

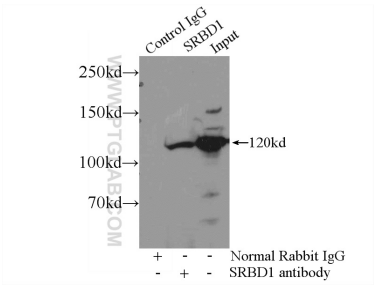
Store at -20°C. Stable for one year after shipment.

Storage Buffer:

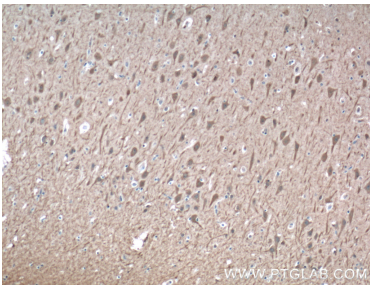
PBS with 0.02% sodium azide and 50% glycerol pH 7.3.

Aliquoting is unnecessary for -20°C storage

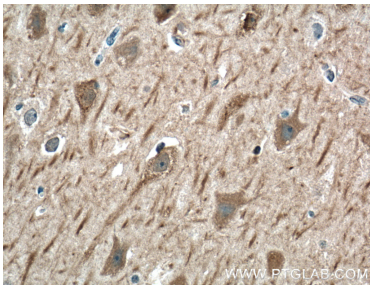
Selected Validation Data



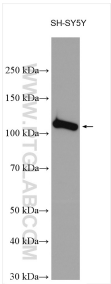
IP result of anti-SRBD1 (IP:24931-1-AP, 4ug; Detection:24931-1-AP 1:300) with mouse brain tissue lysate 4000ug.



Immunohistochemical analysis of paraffin-embedded human brain tissue slide using 24931-1-AP (SRBD1 Antibody) at dilution of 1:200 (under 10x lens). Heat mediated antigen retrieval with Tris-EDTA buffer (pH 9.0).



Immunohistochemical analysis of paraffin-embedded human brain tissue slide using 24931-1-AP (SRBD1 Antibody) at dilution of 1:200 (under 40x lens). Heat mediated antigen retrieval with Tris-EDTA buffer (pH 9.0).



SH-SY5Y cells were subjected to SDS PAGE followed by western blot with 24931-1-AP (SRBD1 antibody) at dilution of 1:4000 incubated at room temperature for 1.5 hours.