

For Research Use Only

ILK Polyclonal antibody

Catalog Number: 24926-1-AP

1 Publications



Basic Information

Catalog Number:

24926-1-AP

Size:

500 µg/ml

Source:

Rabbit

Isotype:

IgG

Immunogen Catalog Number:

AG21494

GenBank Accession Number:

BC001554

GeneID (NCBI):

3611

UNIPROT ID:

Q13418

Full Name:

integrin-linked kinase

Calculated MW:

451 aa, 59 kDa

Observed MW:

51 kDa

Purification Method:

Antigen affinity purification

Recommended Dilutions:

WB 1:500-1:2000

IHC 1:50-1:500

IF/ICC 1:20-1:200

Applications

Tested Applications:

IF/ICC, IHC, WB, ELISA

Cited Applications:

IHC

Species Specificity:

human, mouse

Cited Species:

mouse

Note-IHC: suggested antigen retrieval with TE buffer pH 9.0; (*) Alternatively, antigen retrieval may be performed with citrate buffer pH 6.0

Positive Controls:

WB : mouse heart tissue, MCF-7 cells

IHC : human pancreas cancer tissue,

IF/ICC : MCF-7 cells,

Background Information

ILK(Integrin-linked protein kinase) is also named as p59, PAT-4, DKFZp686F1765, ILK-1, ILK-2, ILK1, ILK2, p59ILK and belongs to the TKL Ser/Thr protein kinase family. This protein localizes to multiple sites, including the cytoplasm, and imports into the nucleus through sequences in its N-terminus, via active transport mechanisms that involve nuclear pore complexes(PMID: 18635968). ILK performs crucial roles in the control of intestinal cell and crypt-villus axis homeostasis-especially with regard to basement membrane fibronectin deposition-as well as cell proliferation, spreading, and migration(PMID:19885839).

Notable Publications

Author	Pubmed ID	Journal	Application
Menghong Xu	35289594	ACS Appl Mater Interfaces	IHC

Storage

Storage:

Store at -20°C. Stable for one year after shipment.

Storage Buffer:

PBS with 0.02% sodium azide and 50% glycerol pH 7.3.

Aliquoting is unnecessary for -20°C storage

For technical support and original validation data for this product please contact:

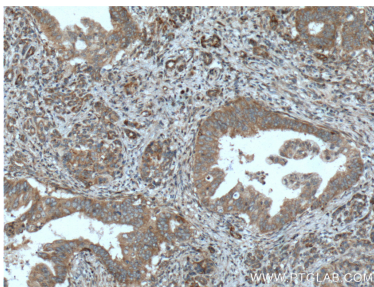
T: 4006900926

E: Proteintech-CN@ptglab.com

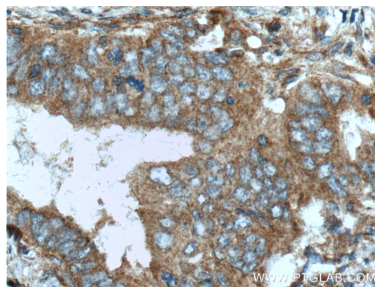
W: ptgcn.com

This product is exclusively available under Proteintech Group brand and is not available to purchase from any other manufacturer.

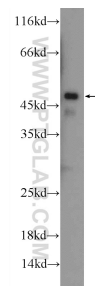
Selected Validation Data



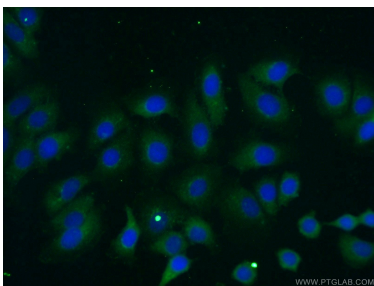
Immunohistochemical analysis of paraffin-embedded human pancreas cancer tissue slide using 24926-1-AP (ILK Antibody) at dilution of 1:200 (under 10x lens). Heat mediated antigen retrieval with Tris-EDTA buffer (pH 9.0).



Immunohistochemical analysis of paraffin-embedded human pancreas cancer tissue slide using 24926-1-AP (ILK Antibody) at dilution of 1:200 (under 40x lens). Heat mediated antigen retrieval with Tris-EDTA buffer (pH 9.0).



mouse heart tissue were subjected to SDS PAGE followed by western blot with 24926-1-AP (ILK Antibody) at dilution of 1:1000 incubated at room temperature for 1.5 hours.



Immunofluorescent analysis of (-20°C Ethanol) fixed MCF-7 cells using 24926-1-AP (ILK antibody) at dilution of 1:50 and Alexa Fluor 488-conjugated AffiniPure Goat Anti-Rabbit IgG(H+L).