

For Research Use Only

CUX2 Polyclonal antibody

Catalog Number: 24902-1-AP

3 Publications



Basic Information

Catalog Number:

24902-1-AP

Concentration:

700 ug/ml

Source:

Rabbit

Isotype:

IgG

Immunogen Catalog Number:

AG18809

GenBank Accession Number:

BC151245

GeneID (NCBI):

23316

UNIPROT ID:

O14529

Full Name:

cut-like homeobox 2

Calculated MW:

1486 aa, 162 kDa

Observed MW:

162 kDa

Purification Method:

Antigen affinity purification

Recommended Dilutions:

WB 1:500-1:2000

Applications

Tested Applications:

WB, ELISA

Cited Applications:

WB, IHC

Species Specificity:

human, mouse, rat

Cited Species:

mouse

Positive Controls:

WB : rat cerebellum tissue,

Background Information

Cut like homeobox 2 (CUX2) also named as, CDP2 or CUTL2, is a 1486 amino acid protein, which contains one homeobox DNA-binding domain and three CUT DNA-binding domains. CUX2 localizes in the nucleus and belongs to the CUT homeobox family. CUX2 may as a transcription factor be involved in neural specification.

Notable Publications

Author	Pubmed ID	Journal	Application
Benjamin D Weger	30344015	Cell Metab	WB
Debabrata Hazra	35136976	Cereb Cortex	IHC
Sriram Sudarsanam	39896513	bioRxiv	IHC

Storage

Storage:

Store at -20°C. Stable for one year after shipment.

Storage Buffer:

PBS with 0.02% sodium azide and 50% glycerol, pH7.3

Aliquoting is unnecessary for -20°C storage

For technical support and original validation data for this product please contact:

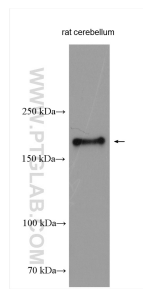
T: 4006900926

E: Proteintech-CN@ptglab.com

W: ptgcn.com

This product is exclusively available under Proteintech Group brand and is not available to purchase from any other manufacturer.

Selected Validation Data



rat cerebellum tissue were subjected to SDS PAGE followed by western blot with 24902-1-AP (CUX2 antibody) at dilution of 1:1000 incubated at room temperature for 1.5 hours.