

For Research Use Only

GEMIN5 Polyclonal antibody

Catalog Number: 24897-1-AP **2 Publications**



Basic Information

Catalog Number: 24897-1-AP	GenBank Accession Number: BC113614	Purification Method: Antigen affinity purification
Size: 850 µg/ml	GeneID (NCBI): 25929	Recommended Dilutions: WB 1:1000-1:6000
Source: Rabbit	UNIPROT ID: Q8TEQ6	IP 0.5-4.0 ug for 1.0-3.0 mg of total protein lysate
Isotype: IgG	Full Name: gem (nuclear organelle) associated protein 5	IHC 1:50-1:500 IF 1:10-1:100
Immunogen Catalog Number: AG19268	Calculated MW: 1508 aa, 169 kDa	
	Observed MW: 168 kDa	

Applications

Tested Applications: IF/ICC, IHC, IP, WB, ELISA	Positive Controls: WB : HEK-293 cells, HeLa cells, Jurkat cells
Cited Applications: WB, IF	IP : HeLa cells,
Species Specificity: human, mouse	IHC : mouse cerebellum tissue,
Cited Species: human	IF : HeLa cells,

Note-IHC: suggested antigen retrieval with TE buffer pH 9.0; (*) Alternatively, antigen retrieval may be performed with citrate buffer pH 6.0

Background Information

GEMIN5 also named as Gem associated protein 5 is a 1508 amino-acid protein, which belongs to the WD repeat gemin-5 family. The molecular weight of GEMIN5 is 168 kDa GEMIN5 is a component of SMN complex, which plays an essential role in spliceosomal snRNP assembly in the cytoplasm and is required for pre-mRNA splicing in the nucleus. GEMIN5 is identified as the factor that allows the SMN complex to distinguish snRNAs from other cellular RNAs for snRNP biogenesis. GEMIN5 is found in nucleoplasm, nuclear bodies and cytoplasm.

Notable Publications

Author	Pubmed ID	Journal	Application
Deepa S Rajan	35295849	Front Cell Dev Biol	WB
Dongxu Jiang	29537490	FEBS Lett	WB,IF

Storage

Storage:
Store at -20°C. Stable for one year after shipment.
Storage Buffer:
PBS with 0.02% sodium azide and 50% glycerol pH 7.3.
Aliquoting is unnecessary for -20°C storage

For technical support and original validation data for this product please contact:

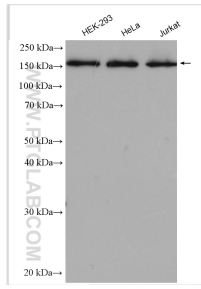
T: 4006900926

E: Proteintech-CN@ptglab.com

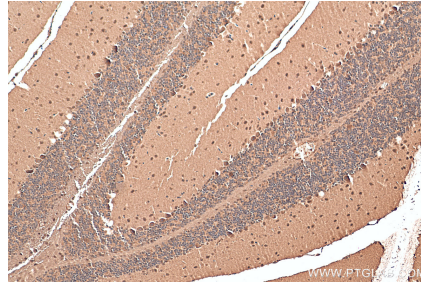
W: ptgcn.com

This product is exclusively available under Proteintech Group brand and is not available to purchase from any other manufacturer.

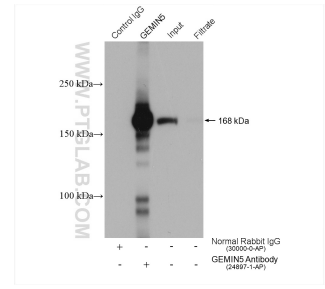
Selected Validation Data



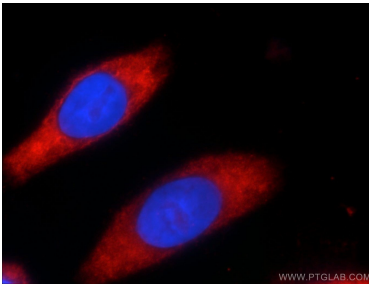
Various lysates were subjected to SDS PAGE followed by western blot with 24897-1-AP (GEMIN5 antibody) at dilution of 1:3000 incubated at room temperature for 1.5 hours.



Immunohistochemical analysis of paraffin-embedded mouse cerebellum tissue slide using 24897-1-AP (GEMIN5 antibody) at dilution of 1:200 (under 10x lens). Heat mediated antigen retrieval with Tris-EDTA buffer (pH 9.0).



IP result of anti-GEMIN5 (IP:24897-1-AP, 4ug; Detection:24897-1-AP 1:1000) with HeLa cells lysate 1880 ug.



Immunofluorescent analysis of HeLa cells using 24897-1-AP (GEMIN5 antibody) at dilution of 1:25 and Rhodamine-Goat anti-Rabbit IgG.