

For Research Use Only

# CCT2 Polyclonal antibody, PBS Only

Catalog Number: 24896-1-PBS

Featured Product



## Basic Information

Catalog Number:

24896-1-PBS

Size:

1 mg/ml

Source:

Rabbit

Isotype:

IgG

Immunogen Catalog Number:

AG19264

GenBank Accession Number:

BC113516

GeneID (NCBI):

10576

UNIPROT ID:

P78371

Full Name:

chaperonin containing TCP1, subunit 2 (beta)

Calculated MW:

535 aa, 57 kDa

Observed MW:

50-58 kDa

Purification Method:

Antigen affinity purification

## Applications

Tested Applications:

WB, IHC, IF/ICC, Indirect ELISA

Species Specificity:

human, mouse

## Background Information

CCT2 is a gene encoding a molecular chaperone that is a member of the chaperonin-containing TCP1 complex (CCT), also known as the TCP1 ring complex (TRiC). The switch of CCT2's role from a chaperonin to a specific aggregophagy receptor is achieved by CCT2 monomer formation. CCT2 functions independently of ubiquitin and the TRiC complex to facilitate the autophagic clearance of solid protein aggregates. CCT2 has 2 isoforms with a molecular mass of 53 and 57 kDa. (PMID: 35699934)

## Storage

Storage:

Store at -80°C.

The product is shipped with ice packs. Upon receipt, store it immediately at -80°C

Storage Buffer:

PBS Only

For technical support and original validation data for this product please contact:

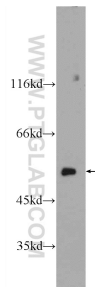
T: 4006900926

E: [Proteintech-CN@ptglab.com](mailto:Proteintech-CN@ptglab.com)

W: [ptgcn.com](http://ptgcn.com)

This product is exclusively available under Proteintech Group brand and is not available to purchase from any other manufacturer.

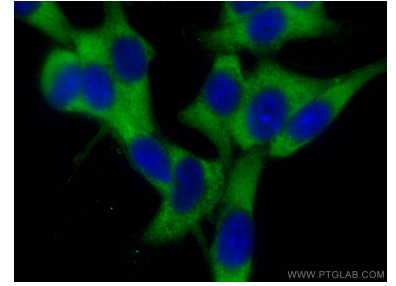
## Selected Validation Data



mouse testis tissue were subjected to SDS PAGE followed by western blot with 24896-1-AP (CCT2 Antibody) at dilution of 1:1000 incubated at room temperature for 1.5 hours. This data was developed using the same antibody clone with 24896-1-PBS in a different storage buffer formulation.



Immunohistochemical analysis of paraffin-embedded human stomach tissue slide using 24896-1-AP (CCT2 antibody) at dilution of 1:200 (under 20x lens). Heat mediated antigen retrieval with Tris-EDTA buffer (pH 9.0). This data was developed using the same antibody clone with 24896-1-PBS in a different storage buffer formulation.



Immunofluorescent analysis of (-20°C Methanol) fixed NIH/3T3 cells using CCT2 antibody (24896-1-AP) at dilution of 1:400 and CoraLite®488-Conjugated AffiniPure Goat Anti-Rabbit IgG(H+L). This data was developed using the same antibody clone with 24896-1-PBS in a different storage buffer formulation.