

For Research Use Only

PTGER4 Polyclonal antibody

Catalog Number: 24895-1-AP

14 Publications



Basic Information

Catalog Number:

24895-1-AP

Size:

400 µg/ml

Source:

Rabbit

Isotype:

IgG

Immunogen Catalog Number:

AG19217

GenBank Accession Number:

BC101534

GeneID (NCBI):

5734

UNIPROT ID:

P35408

Full Name:

prostaglandin E receptor 4 (subtype EP4)

Calculated MW:

488 aa, 53 kDa

Observed MW:

53 kDa

Purification Method:

Antigen affinity purification

Recommended Dilutions:

WB 1:500-1:1000

IHC 1:50-1:500

Applications

Tested Applications:

WB, IHC, ELISA

Cited Applications:

WB, IHC, IF

Species Specificity:

human, mouse, rat

Cited Species:

human, mouse, rat

Note-IHC: suggested antigen retrieval with TE buffer pH 9.0; (*) Alternatively, antigen retrieval may be performed with citrate buffer pH 6.0

Positive Controls:

WB : rat brain tissue, HL-60 cells, mouse brain tissue

IHC : human prostate hyperplasia tissue,

Background Information

PTGER4 (Prostaglandin E2 receptor EP4 subtype, also known as EP4R) is a member of the G-protein coupled receptor family. This protein is one of four receptors identified for prostaglandin E2 (PGE2). May play an important role in regulating renal hemodynamics, intestinal epithelial transport, adrenal aldosterone secretion, and uterine function.

Notable Publications

Author	Pubmed ID	Journal	Application
Kojiro Nakamura	31329160	J Clin Invest	WB
Xingxing Chen	31297954	J Cell Mol Med	WB
Hu Xu	32641583	JCI Insight	WB

Storage

Storage:

Store at -20°C. Stable for one year after shipment.

Storage Buffer:

PBS with 0.02% sodium azide and 50% glycerol pH 7.3.

Aliquoting is unnecessary for -20°C storage

For technical support and original validation data for this product please contact:

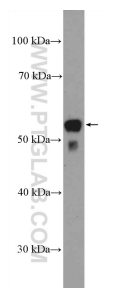
T: 4006900926

E: Proteintech-CN@ptglab.com

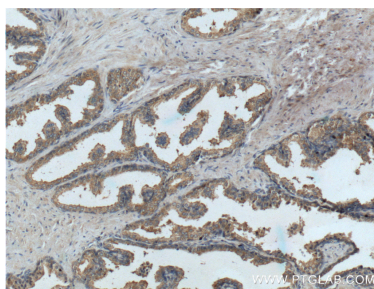
W: ptgcn.com

This product is exclusively available under Proteintech Group brand and is not available to purchase from any other manufacturer.

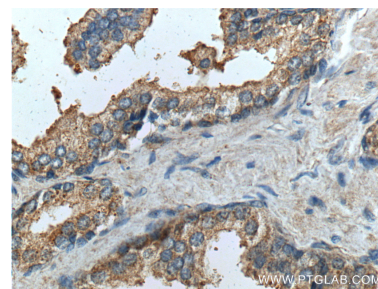
Selected Validation Data



rat brain tissue were subjected to SDS PAGE followed by western blot with 24895-1-AP (PTGER4 Antibody) at dilution of 1:600 incubated at room temperature for 1.5 hours.



Immunohistochemical analysis of paraffin-embedded human prostate hyperplasia tissue slide using 24895-1-AP (PTGER4 Antibody) at dilution of 1:200 (under 10x lens).



Immunohistochemical analysis of paraffin-embedded human prostate hyperplasia tissue slide using 24895-1-AP (PTGER4 Antibody) at dilution of 1:200 (under 40x lens).