

For Research Use Only

CYP7B1 Polyclonal antibody, PBS Only

Catalog Number: 24889-1-PBS



Basic Information

Catalog Number:

24889-1-PBS

Source:

Rabbit

Isotype:

IgG

Immunogen Catalog Number:

AG19374

GenBank Accession Number:

BC136574

GeneID (NCBI):

9420

UNIPROT ID:

O75881

Full Name:

cytochrome P450, family 7, subfamily B, polypeptide 1

Calculated MW:

506 aa, 58 kDa

Observed MW:

50-55 kDa

Purification Method:

Antigen affinity purification

Applications

Tested Applications:

WB, IHC, IF/ICC, Indirect ELISA

Species Specificity:

human, mouse

Background Information

CYP7B1 (Cytochrome P450 7B1) is also named as 25-hydroxycholesterol 7- α -hydroxylase and belongs to the cytochrome P450 family. It catalyzes the first and rate-limiting step in the coconversion of cholesterol to bile acids and CYP7B1-mediated catalysis may play a role for control of the cellular levels of androgens, not only of estrogens.

Storage

Storage:

Store at -80°C.

The product is shipped with ice packs. Upon receipt, store it immediately at -80°C

Storage Buffer:

PBS only, pH7.3

For technical support and original validation data for this product please contact:

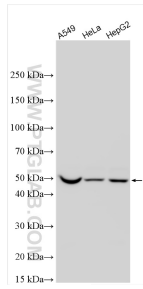
T: 4006900926

E: Proteintech-CN@ptglab.com

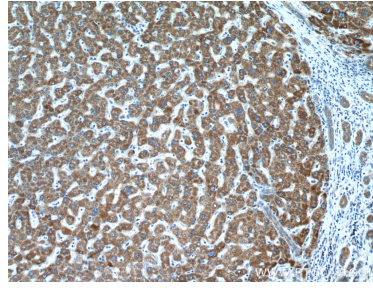
W: ptgcn.com

This product is exclusively available under Proteintech Group brand and is not available to purchase from any other manufacturer.

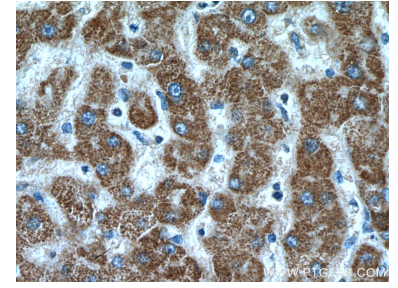
Selected Validation Data



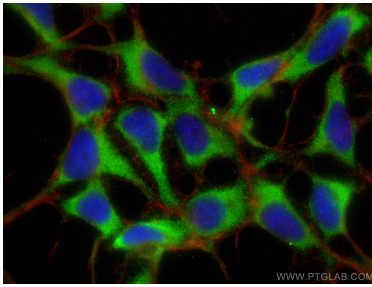
Various lysates were subjected to SDS PAGE followed by western blot with 24889-1-AP (CYP7B1 antibody) at dilution of 1:4000 incubated at room temperature for 1.5 hours. This data was developed using the same antibody clone with 24889-1-PBS in a different storage buffer formulation.



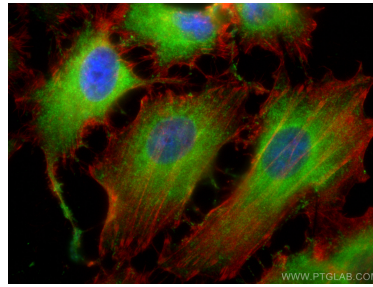
Immunohistochemical analysis of paraffin-embedded human liver cancer tissue slide using 24889-1-AP (CYP7B1 antibody) at dilution of 1:200 (under 10x lens). This data was developed using the same antibody clone with 24889-1-PBS in a different storage buffer formulation.



Immunohistochemical analysis of paraffin-embedded human liver cancer tissue slide using 24889-1-AP (CYP7B1 antibody) at dilution of 1:200 (under 40x lens). This data was developed using the same antibody clone with 24889-1-PBS in a different storage buffer formulation.



Immunofluorescent analysis of (-20°C Ethanol) fixed HEK-293 cells using CYP7B1 antibody (24889-1-AP) at dilution of 1:200 and CoraLite®488-Conjugated AffiniPure Goat Anti-Rabbit IgG(H+L), CL594-Phalloidin (red). This data was developed using the same antibody clone with 24889-1-PBS in a different storage buffer formulation.



Immunofluorescent analysis of (-20°C Ethanol) fixed HeLa cells using CYP7B1 antibody (24889-1-AP) at dilution of 1:400 and CoraLite®488-Conjugated AffiniPure Goat Anti-Rabbit IgG(H+L) (SA00013-2), CL594-phalloidin (red). This data was developed using the same antibody clone with 24889-1-PBS in a different storage buffer formulation.