

## CYP7B1 Polyclonal antibody

Catalog Number: 24889-1-AP

21 Publications

## Basic Information

## Catalog Number:

24889-1-AP

## Size:

650 µg/ml

## Source:

Rabbit

## Isotype:

IgG

## Immunogen Catalog Number:

AG19374

## GenBank Accession Number:

BC136574

## GeneID (NCBI):

9420

## UNIPROT ID:

O75881

## Full Name:

cytochrome P450, family 7, subfamily B, polypeptide 1

## Calculated MW:

506 aa, 58 kDa

## Observed MW:

50-55 kDa

## Purification Method:

Antigen affinity purification

## Recommended Dilutions:

WB 1:500-1:2000

IHC 1:50-1:500

IF 1:50-1:500

## Applications

## Tested Applications:

WB, IF/ICC, IHC, ELISA

## Cited Applications:

WB, IHC

## Species Specificity:

human, mouse

## Cited Species:

human, rat, mouse

**Note-IHC: suggested antigen retrieval with TE buffer pH 9.0; (\*) Alternatively, antigen retrieval may be performed with citrate buffer pH 6.0**

## Positive Controls:

WB : A431 cells, HEK-293 cells, mouse liver tissue

IHC : human liver cancer tissue, human brain tissue, human liver tissue, mouse liver tissue

IF : HEK-293 cells, HeLa cells

## Background Information

CYP7B1(Cytochrome P450 7B1) is also named as 25-hydroxycholesterol 7-alpha-hydroxylase and belongs to the cytochrome P450 family. It catalyzes the first and rate-limiting step in the coconversion of cholesterol to bile acids and CYP7B1-mediated catalysis may play a role for control of the cellular levels of androgens, not only of estrogens.

## Notable Publications

Author	Pubmed ID	Journal	Application
Wenyun Li	34563664	J Nutr Biochem	WB
Dandan Zhong	30196282	Cell Physiol Biochem	WB
Yanan Chen	31628911	Biochem Pharmacol	WB

## Storage

## Storage:

Store at -20°C. Stable for one year after shipment.

## Storage Buffer:

PBS with 0.02% sodium azide and 50% glycerol pH 7.3.

Aliquoting is unnecessary for -20°C storage

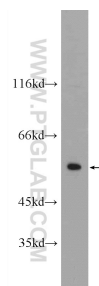
For technical support and original validation data for this product please contact:

T: 4006900926

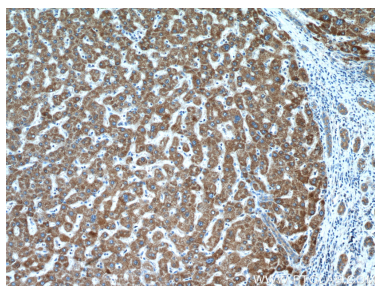
E: [Proteintech-CN@ptglab.com](mailto:Proteintech-CN@ptglab.com)W: [ptgcn.com](http://ptgcn.com)

This product is exclusively available under Proteintech Group brand and is not available to purchase from any other manufacturer.

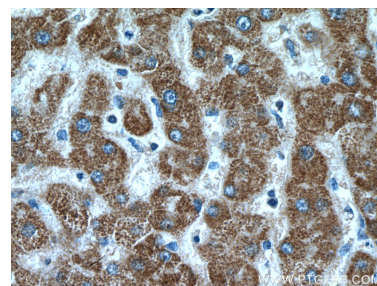
## Selected Validation Data



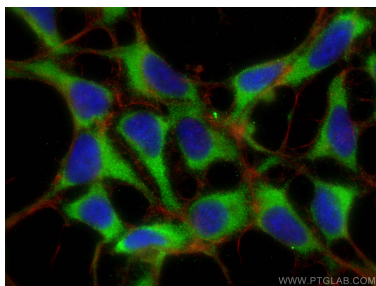
A431 cells were subjected to SDS PAGE followed by western blot with 24889-1-AP (CYP7B1 Antibody) at dilution of 1:1000 incubated at room temperature for 1.5 hours.



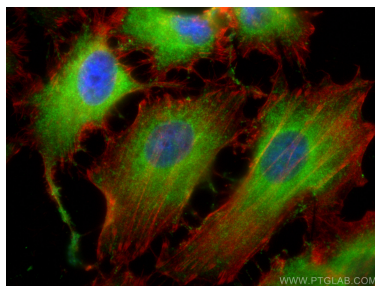
Immunohistochemical analysis of paraffin-embedded human liver cancer tissue slide using 24889-1-AP (CYP7B1 antibody) at dilution of 1:200 (under 10x lens).



Immunohistochemical analysis of paraffin-embedded human liver cancer tissue slide using 24889-1-AP (CYP7B1 antibody) at dilution of 1:200 (under 40x lens).



Immunofluorescent analysis of (-20°C Ethanol) fixed HEK-293 cells using CYP7B1 antibody (24889-1-AP) at dilution of 1:200 and CoraLite®488-Conjugated AffiniPure Goat Anti-Rabbit IgG(H+L), CL594-Phalloidin (red).



Immunofluorescent analysis of (-20°C Ethanol) fixed HeLa cells using CYP7B1 antibody (24889-1-AP) at dilution of 1:400 and CoraLite®488-Conjugated AffiniPure Goat Anti-Rabbit IgG(H+L) (SA00013-2), CL594-phalloidin (red).