

KIAA1217 Polyclonal antibody

Catalog Number: 24880-1-AP

Basic Information

Catalog Number:

24880-1-AP

Size:

900 µg/ml

Source:

Rabbit

Isotype:

IgG

Immunogen Catalog Number:

AG19367

GenBank Accession Number:

BC018764

GeneID (NCBI):

56243

UNIPROT ID:

Q5T5P2

Full Name:

KIAA1217

Calculated MW:

1943 aa, 214 kDa

Observed MW:

100-110 kDa, 140-160 kDa, 210 kDa

Purification Method:

Antigen affinity purification

Recommended Dilutions:

WB 1:500-1:1000

Applications

Tested Applications:

WB, ELISA

Species Specificity:

human, mouse, rat

Positive Controls:

WB : HEK-293 cells, rat colon tissue, mouse colon tissue

Background Information

KIAA1217, sickle tail protein homolog, is required for normal development of intervertebral disks. It promotes epithelial-mesenchymal transition and hepatocellular carcinoma metastasis by interacting with and activating STAT3, indicating its potential as a therapeutic target for curbing HCC metastasis (PMID: 35008530). It is also a novel candidate gene associated with isolated and syndromic vertebral malformations (PMID: 32369272). KIAA1217 has 9 alternatively spliced isoforms of 100-110 kDa, 140-160 kDa, 210 kDa.

Storage

Storage:

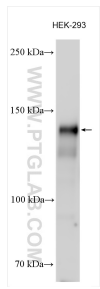
Store at -20°C. Stable for one year after shipment.

Storage Buffer:

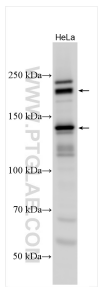
PBS with 0.02% sodium azide and 50% glycerol pH 7.3.

Aliquoting is unnecessary for -20°C storage

Selected Validation Data



Various lysates were subjected to SDS PAGE followed by western blot with 24880-1-AP (KIAA1217 antibody) at dilution of 1:500 incubated at room temperature for 1.5 hours.



HeLa cells were subjected to SDS PAGE followed by western blot with 24880-1-AP (KIAA1217 antibody) at dilution of 1:500 incubated at room temperature for 1.5 hours.