

LRCH2 Polyclonal antibody

Catalog Number: 24866-1-AP

Basic Information

Catalog Number:

24866-1-AP

Size:

600 µg/ml

Source:

Rabbit

Isotype:

IgG

Immunogen Catalog Number:

AG21701

GenBank Accession Number:

BC125224

GeneID (NCBI):

57631

UNIPROT ID:

Q5VUJ6

Full Name:

leucine-rich repeats and calponin
homology (CH) domain containing 2

Calculated MW:

765 aa, 85 kDa

Observed MW:

84 kDa

Purification Method:

Antigen affinity purification

Recommended Dilutions:

WB 1:500-1:3000

IHC 1:20-1:200

Applications

Tested Applications:

IHC, WB, ELISA

Species Specificity:

human, mouse

**Note-IHC: suggested antigen retrieval with
TE buffer pH 9.0; (*) Alternatively, antigen
retrieval may be performed with citrate
buffer pH 6.0**

Positive Controls:

WB : mouse brain tissue, mouse heart tissue, mouse
ovary tissue

IHC : human colon tissue,

Background Information

Leucine rich repeat and calponin homology domain containing protein 2 (LRCH2) also named as KIAA1495 is a 765 amino acid protein, which contains one CH domain and nine LRR repeats. The function of LRCH2 is still non-known.

Storage

Storage:

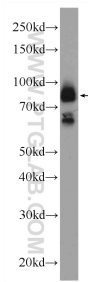
Store at -20°C. Stable for one year after shipment.

Storage Buffer:

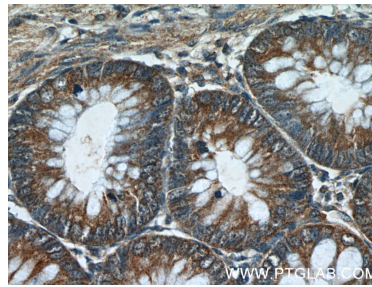
PBS with 0.02% sodium azide and 50% glycerol pH 7.3.

Aliquoting is unnecessary for -20°C storage

Selected Validation Data



mouse brain tissue were subjected to SDS PAGE followed by western blot with 24866-1-AP (LRCH2 Antibody) at dilution of 1:1500 incubated at room temperature for 1.5 hours.



Immunohistochemical analysis of paraffin-embedded human colon tissue slide using 24866-1-AP (LRCH2 Antibody) at dilution of 1:50 (under 40x lens).