

## KLHDC5 Polyclonal antibody

Catalog Number: 24847-1-AP

1 Publications

## Basic Information

## Catalog Number:

24847-1-AP

## Size:

550 µg/ml

## Source:

Rabbit

## Isotype:

IgG

## Immunogen Catalog Number:

AG20448

## GenBank Accession Number:

BC137116

## GeneID (NCBI):

57542

## UNIPROT ID:

Q9P2K6

## Full Name:

kelch domain containing 5

## Calculated MW:

505 aa, 57 kDa

## Observed MW:

56 kDa

## Purification Method:

Antigen affinity purification

## Recommended Dilutions:

WB 1:500-1:2000

IHC 1:50-1:500

IF/ICC 1:20-1:200

## Applications

## Tested Applications:

WB, IHC, IF/ICC, ELISA

## Cited Applications:

WB, IHC

## Species Specificity:

human, mouse

## Cited Species:

human, mouse

**Note-IHC: suggested antigen retrieval with TE buffer pH 9.0; (\*) Alternatively, antigen retrieval may be performed with citrate buffer pH 6.0**

## Positive Controls:

WB : HeLa cells, mouse brain tissue

IHC : human kidney tissue,

IF/ICC : HeLa cells,

## Background Information

KLHDC5 also named as kelch domain containing 5 or KLHL42 is a 505 amino acid protein, which contains one BTB domain and six Kelch repeats. KLHDC5 localizes in cytoplasm and may involve in microtubule dynamics throughout mitosis.

## Notable Publications

Author	Pubmed ID	Journal	Application
Jia-Ling Ji	37596398	Acta Pharmacol Sin	WB,IHC

## Storage

## Storage:

Store at -20°C. Stable for one year after shipment.

## Storage Buffer:

PBS with 0.02% sodium azide and 50% glycerol pH 7.3.

Aliquoting is unnecessary for -20°C storage

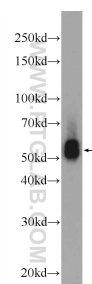
For technical support and original validation data for this product please contact:

T: 4006900926

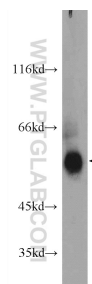
E: [Proteintech-CN@ptglab.com](mailto:Proteintech-CN@ptglab.com)W: [ptgcn.com](http://ptgcn.com)

This product is exclusively available under Proteintech Group brand and is not available to purchase from any other manufacturer.

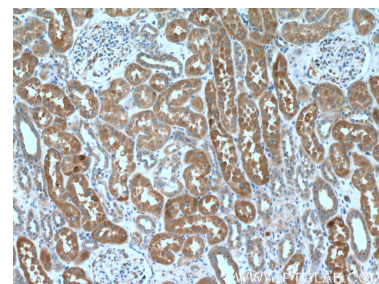
## Selected Validation Data



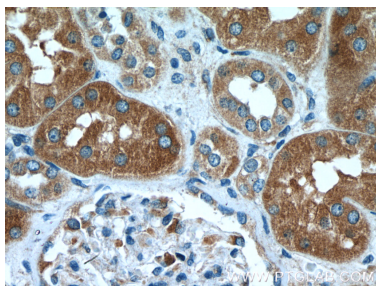
HeLa cells were subjected to SDS PAGE followed by western blot with 24847-1-AP (KLHDC5 Antibody) at dilution of 1:1000 incubated at room temperature for 1.5 hours.



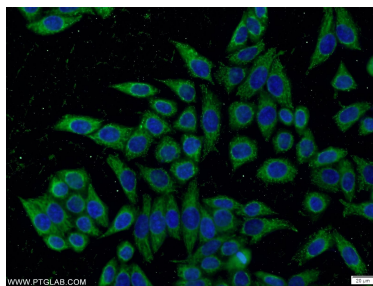
mouse brain tissue were subjected to SDS PAGE followed by western blot with 24847-1-AP (KLHDC5 Antibody) at dilution of 1:1000 incubated at room temperature for 1.5 hours.



Immunohistochemical analysis of paraffin-embedded human kidney tissue slide using 24847-1-AP (KLHDC5 Antibody) at dilution of 1:200 (under 10x lens).



Immunohistochemical analysis of paraffin-embedded human kidney tissue slide using 24847-1-AP (KLHDC5 Antibody) at dilution of 1:200 (under 40x lens).



Immunofluorescent analysis of HeLa cells using 24847-1-AP (KLHDC5 antibody) at dilution of 1:50 and Alexa Fluor 488-conjugated AffiniPure Goat Anti-Rabbit IgG(H+L).