

For Research Use Only

# KIF1A Polyclonal antibody

Catalog Number: 24841-1-AP



## Basic Information

<b>Catalog Number:</b> 24841-1-AP	<b>GenBank Accession Number:</b> BC111799	<b>Purification Method:</b> Antigen affinity purification
<b>Size:</b> 300 µg/ml	<b>GeneID (NCBI):</b> 547	<b>Recommended Dilutions:</b> WB 1:500-1:1000 IF 1:200-1:800
<b>Source:</b> Rabbit	<b>UNIPROT ID:</b> Q12756	
<b>Isotype:</b> IgG	<b>Full Name:</b> kinesin family member 1A	
<b>Immunogen Catalog Number:</b> AG18817	<b>Calculated MW:</b> 1690 aa, 191 kDa	
	<b>Observed MW:</b> 191-203 kDa	

## Applications

<b>Tested Applications:</b> IF/ICC, WB, ELISA	<b>Positive Controls:</b> WB : SH-SY5Y cells, IF : SH-SY5Y cells,
<b>Species Specificity:</b> human, mouse, rat	

## Background Information

### Storage

**Storage:**  
Store at -20°C. Stable for one year after shipment.  
**Storage Buffer:**  
PBS with 0.02% sodium azide and 50% glycerol pH 7.3.  
Aliquoting is unnecessary for -20°C storage

For technical support and original validation data for this product please contact:

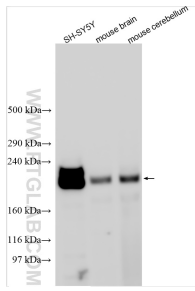
T: 4006900926

E: [Proteintech-CN@ptglab.com](mailto:Proteintech-CN@ptglab.com)

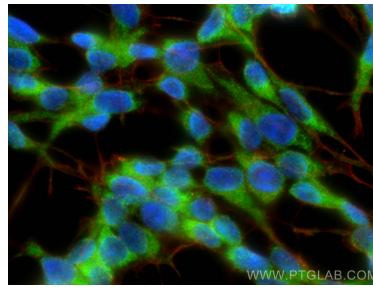
W: [ptgcn.com](http://ptgcn.com)

This product is exclusively available under Proteintech Group brand and is not available to purchase from any other manufacturer.

## Selected Validation Data



Various lysates were subjected to SDS PAGE followed by western blot with 24841-1-AP (KIF1A antibody) at dilution of 1:500 incubated at room temperature for 1.5 hours.



Immunofluorescent analysis of (-20°C Ethanol) fixed SH-SY5Y cells using KIF1A antibody (24841-1-AP) at dilution of 1:400 and CoraLite® 488-Conjugated AffiniPure Goat Anti-Rabbit IgG(H+L), CL594-Phalloidin (red).