

For Research Use Only

SETD7 Polyclonal antibody

Catalog Number: 24840-1-AP

Featured Product

10 Publications



Basic Information

Catalog Number:

24840-1-AP

Size:

500 µg/ml

Source:

Rabbit

Isotype:

IgG

Immunogen Catalog Number:

AG18219

GenBank Accession Number:

BC121055

GeneID (NCBI):

80854

UNIPROT ID:

Q8WTS6

Full Name:

SET domain containing (lysine methyltransferase) 7

Calculated MW:

366 aa, 41 kDa

Observed MW:

48-50 kDa

Purification Method:

Antigen affinity purification

Recommended Dilutions:

WB 1:1000-1:5000

IF/ICC 1:20-1:200

Applications

Tested Applications:

WB, IF/ICC, ELISA

Cited Applications:

WB, IHC, CoIP

Species Specificity:

human, mouse, rat

Cited Species:

human, mouse

Positive Controls:

WB : HeLa cells, C6 cells, mouse brain tissue, mouse kidney tissue, NIH/3T3 cells, rat brain tissue

IF/ICC : HeLa cells,

Background Information

SET domain containing lysine methyltransferase 7 (SETD7, also called SET7/9) was the first lysine methyltransferase (KMT) discovered to specifically monomethylate lysine-4 of histone 3 (H3K4me1) (PMID: 26435321). SETD7 has been shown to have a very broad target specificity in vitro, including transcriptional regulators such as TAF10, p53, ER, p65, STAT3, Rb, Mypt, Tat, and Foxo3 (PMID: 25136132, 30013796).

Notable Publications

Author	Pubmed ID	Journal	Application
Baojun Duan	30361067	EBioMedicine	IHC, WB
Run Huang	29212211	Oncotarget	WB
Jia Xiaoshi	33617050	FASEB J	CoIP

Storage

Storage:

Store at -20°C. Stable for one year after shipment.

Storage Buffer:

PBS with 0.02% sodium azide and 50% glycerol pH 7.3.

Aliquoting is unnecessary for -20°C storage

For technical support and original validation data for this product please contact:

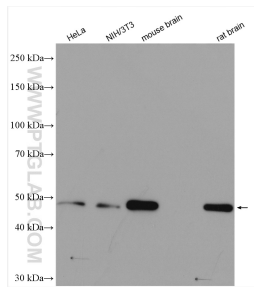
T: 4006900926

E: Proteintech-CN@ptglab.com

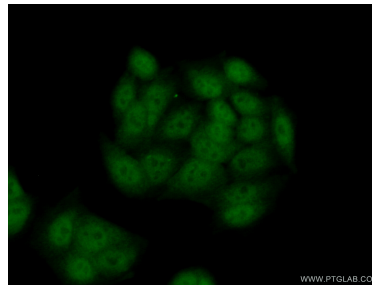
W: ptgcn.com

This product is exclusively available under Proteintech Group brand and is not available to purchase from any other manufacturer.

Selected Validation Data



Various lysates were subjected to SDS PAGE followed by western blot with 24840-1-AP (SETD7 antibody) at dilution of 1:3000 incubated at room temperature for 1.5 hours.



Immunofluorescent analysis of (10% Formaldehyde) fixed HeLa cells using 24840-1-AP (SETD7 antibody) at dilution of 1:50 and Alexa Fluor 488-conjugated Goat Anti-Rabbit IgG(H+L).