

For Research Use Only

# GLDC Polyclonal antibody

Catalog Number: 24827-1-AP

Featured Product

3 Publications



## Basic Information

**Catalog Number:**

24827-1-AP

**Size:**

600 µg/ml

**Source:**

Rabbit

**Isotype:**

IgG

**Immunogen Catalog Number:**

AG20410

**GenBank Accession Number:**

BC111995

**GeneID (NCBI):**

2731

**UNIPROT ID:**

P23378

**Full Name:**

glycine dehydrogenase  
(decarboxylating)

**Calculated MW:**

1020 aa, 113 kDa

**Observed MW:**

113 kDa

**Purification Method:**

Antigen affinity purification

**Recommended Dilutions:**

WB 1:500-1:2000

IP 0.5-4.0 µg for 1.0-3.0 mg of total  
protein lysate

IHC 1:100-1:400

## Applications

**Tested Applications:**

IHC, IP, WB, ELISA

**Cited Applications:**

WB

**Species Specificity:**

human, mouse

**Cited Species:**

human, mouse

**Note-IHC: suggested antigen retrieval with  
TE buffer pH 9.0; (\*) Alternatively, antigen  
retrieval may be performed with citrate  
buffer pH 6.0**

**Positive Controls:**

WB: mouse liver tissue,

IP: mouse liver tissue,

IHC: human liver cancer tissue,

## Background Information

GLDC (Glycine dehydrogenase [decarboxylating], mitochondrial) is also named as GCSP and belongs to the GcvP family. It induces dramatic changes in glycolysis and glycine/serine metabolism that leads to changes in pyrimidine metabolism to regulate cancer cell proliferation (PMID:22225612).

## Notable Publications

Author	Pubmed ID	Journal	Application
Shengya Tian	31562192	Life Sci Alliance	WB
Teresa W M Fan	31337706	J Biol Chem	WB
Jiliang Xia	35817773	Nat Commun	WB

## Storage

**Storage:**

Store at -20°C. Stable for one year after shipment.

**Storage Buffer:**

PBS with 0.02% sodium azide and 50% glycerol pH 7.3.

Aliquoting is unnecessary for -20°C storage

For technical support and original validation data for this product please contact:

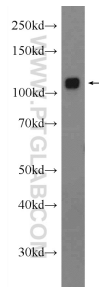
T: 4006900926

E: Proteintech-CN@ptglab.com

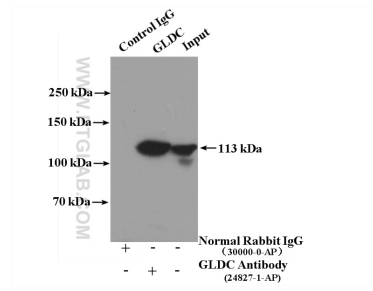
W: ptgcn.com

**This product is exclusively available under Proteintech Group brand and is not available to purchase from any other manufacturer.**

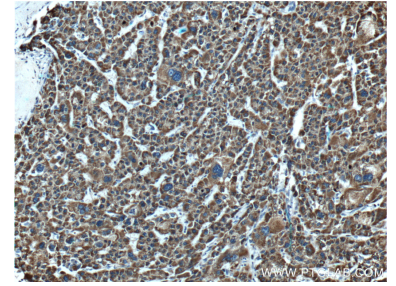
## Selected Validation Data



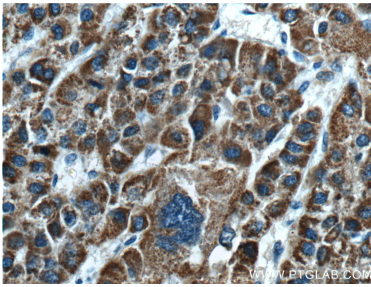
mouse liver tissue were subjected to SDS PAGE followed by western blot with 24827-1-AP (GLDC Antibody) at dilution of 1:1000 incubated at room temperature for 1.5 hours.



IP result of anti-GLDC (IP:24827-1-AP, 4 $\mu$ g; Detection:24827-1-AP 1:1000) with mouse liver tissue lysate 4000 $\mu$ g.



Immunohistochemical analysis of paraffin-embedded human liver cancer tissue slide using 24827-1-AP (GLDC Antibody) at dilution of 1:200 (under 10 $\times$  lens).



Immunohistochemical analysis of paraffin-embedded human liver cancer tissue slide using 24827-1-AP (GLDC Antibody) at dilution of 1:200 (under 40 $\times$  lens).