

C1RL Polyclonal antibody

Catalog Number: 24820-1-AP

Basic Information

Catalog Number:

24820-1-AP

Size:

600 µg/ml

Source:

Rabbit

Isotype:

IgG

Immunogen Catalog Number:

AG20324

GenBank Accession Number:

BC156780

GeneID (NCBI):

51279

UNIPROT ID:

Q9NZP8

Full Name:

complement component 1, r
subcomponent-like

Calculated MW:

487 aa, 53 kDa

Observed MW:

70 kDa

Purification Method:

Antigen affinity purification

Recommended Dilutions:

WB 1:500-1:3000

IF/ICC 1:200-1:800

Applications

Tested Applications:

IF/ICC, WB, ELISA

Species Specificity:

human, mouse

Positive Controls:

WB : human plasma,

IF/ICC : U2OS cells,

Background Information

C1r-like serine protease analog protein (CLSPa), also named as C1RL contains a CUB domain and a serine protease domain, possessing characteristic catalytic triad. C1RL is upregulated in glioblastoma (GBM) and has been proved to be a prognostic marker in hepatocellular carcinoma and renal cell cancer (PMID: 32993564). C1RL has a calculated molecular weight of 53 kDa, and this antibody can detect a band at 70 kDa due to possible N-glycosylation (PMID: 15358180).

Storage

Storage:

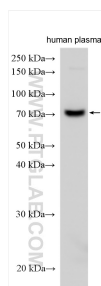
Store at -20°C. Stable for one year after shipment.

Storage Buffer:

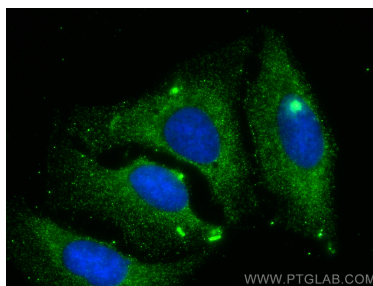
PBS with 0.02% sodium azide and 50% glycerol pH 7.3.

Aliquoting is unnecessary for -20°C storage

Selected Validation Data



Various lysates were subjected to SDS PAGE followed by western blot with 24820-1-AP (C1RL antibody) at dilution of 1:1500 incubated at room temperature for 1.5 hours.



Immunofluorescent analysis of (-20°C Methanol) fixed U2OS cells using C1RL antibody (24820-1-AP) at dilution of 1:400 and CoraLite® 488-Conjugated AffiniPure Goat Anti-Rabbit IgG(H+L).