

For Research Use Only

# DMGDH Polyclonal antibody, PBS Only

Catalog Number: 24813-1-PBS



## Basic Information

Catalog Number:

24813-1-PBS

Size:

1 mg/ml

Source:

Rabbit

Isotype:

IgG

Immunogen Catalog Number:

AG20529

GenBank Accession Number:

BC022388

GeneID (NCBI):

29958

UNIPROT ID:

Q9UI17

Full Name:

dimethylglycine dehydrogenase

Calculated MW:

866 aa, 97 kDa

Observed MW:

97 kDa

Purification Method:

Antigen affinity purification

## Applications

Tested Applications:

WB, IHC, IF/ICC, FC (Intra), Indirect ELISA

Species Specificity:

human, mouse, rat

## Background Information

DMGDH (Dimethylglycine dehydrogenase, mitochondrial) is also named as ME2GLYDH and belongs to the GcvT family. It catalyzes the oxidative demethylation of dimethylglycine to form sarcosine and it plays a role in choline catabolism in the liver. The full length protein has a transit peptide.

## Storage

Storage:

Store at -80°C.

The product is shipped with ice packs. Upon receipt, store it immediately at -80°C

Storage Buffer:

PBS Only

For technical support and original validation data for this product please contact:

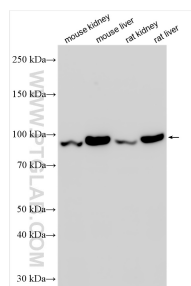
T: 4006900926

E: [Proteintech-CN@ptglab.com](mailto:Proteintech-CN@ptglab.com)

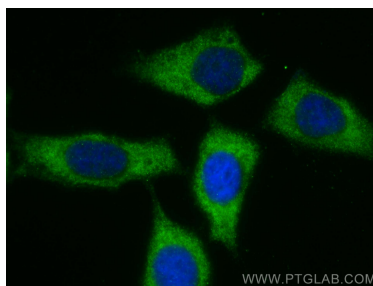
W: [ptgcn.com](http://ptgcn.com)

This product is exclusively available under Proteintech Group brand and is not available to purchase from any other manufacturer.

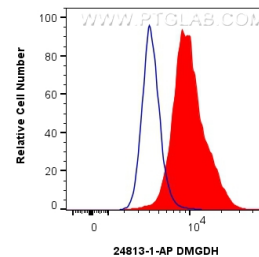
## Selected Validation Data



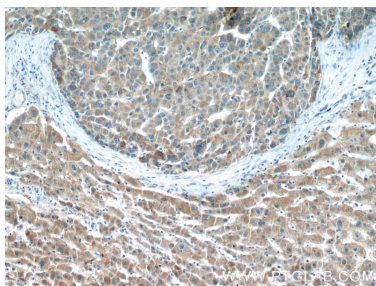
Various lysates were subjected to SDS PAGE followed by western blot with 24813-1-AP (DMGDH antibody) at dilution of 1:6000 incubated at room temperature for 1.5 hours. This data was developed using the same antibody clone with 24813-1-PBS in a different storage buffer formulation.



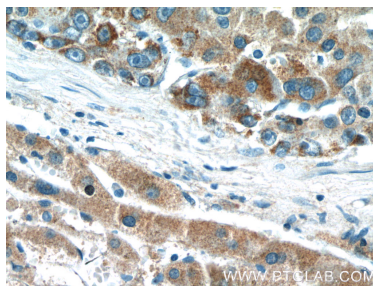
Immunofluorescent analysis of (-20°C Methanol) fixed HepG2 cells using DMGDH antibody (24813-1-AP) at dilution of 1:200 and CoraLite®488-Conjugated AffiniPure Goat Anti-Rabbit IgG(H+L). This data was developed using the same antibody clone with 24813-1-PBS in a different storage buffer formulation.



1x10<sup>6</sup> HepG2 cells were intracellularly stained with 0.4 ug DMGDH Polyclonal antibody (24813-1-AP) and CoraLite®488-Conjugated Goat Anti-Rabbit IgG(H+L) (SA00013-2)(red), or 0.4 ug Rabbit IgG control Rabbit PolyAb (30000-0-AP) (blue). Cells were fixed with 4% PFA and permeabilized with Flow Cytometry Perm Buffer (PF00011-C). This data was developed using the same antibody clone with 24813-1-PBS in a different storage buffer formulation.



Immunohistochemical analysis of paraffin-embedded human liver cancer tissue slide using 24813-1-AP (DMGDH Antibody) at dilution of 1:200 (under 10x lens). This data was developed using the same antibody clone with 24813-1-PBS in a different storage buffer formulation.



Immunohistochemical analysis of paraffin-embedded human liver cancer tissue slide using 24813-1-AP (DMGDH Antibody) at dilution of 1:200 (under 40x lens). This data was developed using the same antibody clone with 24813-1-PBS in a different storage buffer formulation.