

For Research Use Only

CEP128 Polyclonal antibody

Catalog Number: 24810-1-AP



Basic Information

| | | |
|---|--|---|
| Catalog Number: 24810-1-AP | GenBank Accession Number: BC045834 | Purification Method: Antigen affinity purification |
| Size: 700 µg/ml | GeneID (NCBI): 145508 | Recommended Dilutions: WB 1:1000-1:4000 IF/ICC 1:200-1:800 |
| Source: Rabbit | UNIPROT ID: Q6ZU80 | |
| Isotype: IgG | Full Name: chromosome 14 open reading frame 145 | |
| Immunogen Catalog Number: AG20610 | Calculated MW: 1094 aa, 128 kDa | |
| | Observed MW: 128 kDa | |

Applications

| | |
|--|--|
| Tested Applications: WB, IF/ICC, ELISA | Positive Controls: WB : HEK-293T cells, IF/ICC : HeLa cells, U2OS cells |
| Species Specificity: human | |

Background Information

Centrosomal protein of 128kDa is encoded by CEP128 gene in humans. CEP128 localizes to the subdistal appendages of the mother centriole and regulates TGF- β /BMP signaling at the primary cilium (PMID: 29514088). Centrosomal protein CEP128 plays a role in male fertility and its variants affected the ciliogenesis in testes (PMID: 35296684).

Storage

Storage:
Store at -20°C. Stable for one year after shipment.
Storage Buffer:
PBS with 0.02% sodium azide and 50% glycerol pH 7.3.
Aliquoting is unnecessary for -20°C storage

For technical support and original validation data for this product please contact:

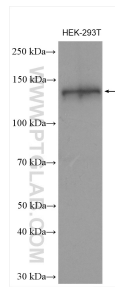
T: 4006900926

E: Proteintech-CN@ptglab.com

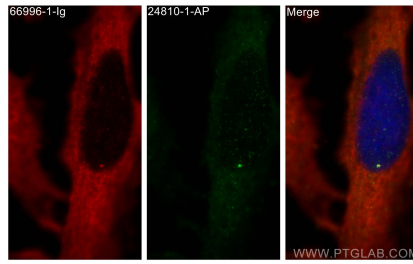
W: ptgcn.com

This product is exclusively available under Proteintech Group brand and is not available to purchase from any other manufacturer.

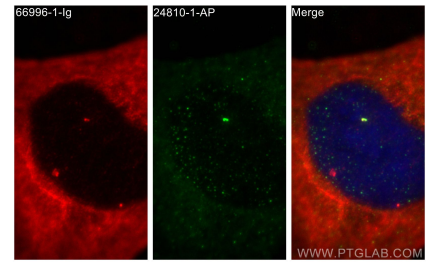
Selected Validation Data



HEK-293T cells were subjected to SDS PAGE followed by western blot with 24810-1-AP (CEP128 antibody) at dilution of 1:2000 incubated at room temperature for 1.5 hours.



Immunofluorescent analysis of (-20°C Methanol) fixed HeLa cells using CEP128 antibody (24810-1-AP) at dilution of 1:400 and CoraLite® 488-Conjugated AffiniPure Goat Anti-Rabbit IgG(H+L), CEP63 antibody (66996-1-Ig, Clone: 2G12B2, red).



Immunofluorescent analysis of (-20°C Methanol) fixed HeLa cells using CEP128 antibody (24810-1-AP) at dilution of 1:400 and CoraLite® 488-Conjugated AffiniPure Goat Anti-Rabbit IgG(H+L), CEP63 antibody (66996-1-Ig, Clone: 2G12B2, red).