

For Research Use Only

# FAM92A1 Polyclonal antibody

Catalog Number: 24803-1-AP

Featured Product

6 Publications



## Basic Information

### Catalog Number:

24803-1-AP

### Size:

700 µg/ml

### Source:

Rabbit

### Isotype:

IgG

### Immunogen Catalog Number:

AG20738

### GenBank Accession Number:

BC014598

### GeneID (NCBI):

137392

### UNIPROT ID:

A1XB55

### Full Name:

family with sequence similarity 92, member A1

### Calculated MW:

289 aa, 33 kDa

### Observed MW:

29-33 kDa

### Purification Method:

Antigen affinity purification

### Recommended Dilutions:

WB 1:500-1:1000

IP 0.5-4.0 µg for 1.0-3.0 mg of total protein lysate

IHC 1:20-1:200

IF/ICC 1:200-1:800

## Applications

### Tested Applications:

WB, IHC, IF/ICC, IP, ELISA

### Cited Applications:

WB, IF

### Species Specificity:

human

### Cited Species:

human, mouse

**Note-IHC: suggested antigen retrieval with TE buffer pH 9.0; (\*) Alternatively, antigen retrieval may be performed with citrate buffer pH 6.0**

### Positive Controls:

WB : HeLa cells,

IP : HeLa cells,

IHC : human renal cell carcinoma tissue,

IF/ICC : HeLa cells,

## Background Information

## Notable Publications

Author	Pubmed ID	Journal	Application
Asier Iturrate	36084634	Am J Hum Genet	WB
Xing Rong Guo	31492191	J Exp Clin Cancer Res	IF
Feng-Qian Li	27528616	Mol Cell Biol	WB,IF

## Storage

### Storage:

Store at -20°C. Stable for one year after shipment.

### Storage Buffer:

PBS with 0.02% sodium azide and 50% glycerol pH 7.3.

Aliquoting is unnecessary for -20°C storage

For technical support and original validation data for this product please contact:

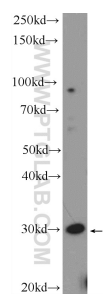
T: 4006900926

E: [Proteintech-CN@ptglab.com](mailto:Proteintech-CN@ptglab.com)

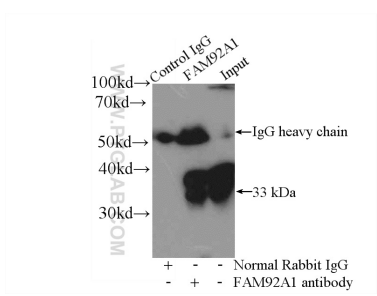
W: [ptgcn.com](http://ptgcn.com)

**This product is exclusively available under Proteintech Group brand and is not available to purchase from any other manufacturer.**

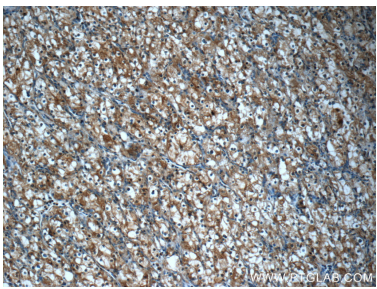
Selected Validation Data



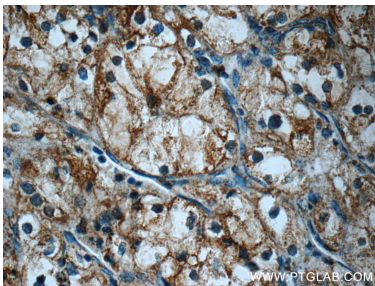
HeLa cells were subjected to SDS PAGE followed by western blot with 24803-1-AP (FAM92A1 Antibody) at dilution of 1:600 incubated at room temperature for 1.5 hours.



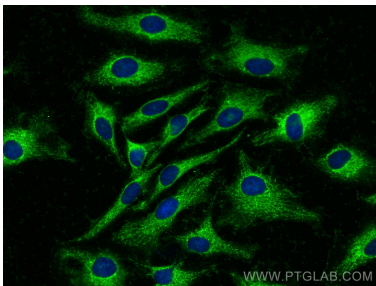
IP result of anti-FAM92A1 (IP:24803-1-AP, 4ug; Detection:24803-1-AP 1:500) with HeLa cells lysate 4000ug.



Immunohistochemical analysis of paraffin-embedded human renal cell carcinoma tissue slide using 24803-1-AP (FAM92A1 Antibody) at dilution of 1:50 (under 10x lens).



Immunohistochemical analysis of paraffin-embedded human renal cell carcinoma tissue slide using 24803-1-AP (FAM92A1 Antibody) at dilution of 1:50 (under 40x lens).



Immunofluorescent analysis of (-20°C Methanol) fixed HeLa cells using FAM92A1 antibody (24803-1-AP) at dilution of 1:400 and CoraLite®488-Conjugated Goat Anti-Rabbit IgG(H+L).