

For Research Use Only

# GIGYF2 Polyclonal antibody, PBS Only

Catalog Number: 24790-1-PBS

Featured Product



## Basic Information

<b>Catalog Number:</b> 24790-1-PBS	<b>GenBank Accession Number:</b> BC146775	<b>Purification Method:</b> Antigen affinity purification
<b>Concentration:</b> 1 mg/ml	<b>GeneID (NCBI):</b> 26058	
<b>Source:</b> Rabbit	<b>UNIPROT ID:</b> Q6Y7W6	
<b>Isotype:</b> IgG	<b>Full Name:</b> GRB10 interacting GYF protein 2	
<b>Immunogen Catalog Number:</b> AG20329	<b>Calculated MW:</b> 1320 aa, 152 kDa	
	<b>Observed MW:</b> 150-170 kDa	

## Applications

**Tested Applications:**  
WB, IHC, IF/ICC, IP, Indirect ELISA

**Species Specificity:**  
human, mouse

## Background Information

GIGYF2 (GRB10 interacting GYF protein 2) was initially identified through its interaction with GRB10, an adapter protein that binds activated INS-like growth factor (IGF-I) and INS receptors (PMID: 12771153; 19744960). It may act cooperatively with GRB10 to regulate tyrosine kinase receptor signaling. The gene of GIGYF2 has been proposed as the Parkinson-disease (PD) gene underlying the PARK11 locus (PMID: 18358451).

## Storage

**Storage:**  
Store at -80°C.  
**The product is shipped with ice packs. Upon receipt, store it immediately at -80°C**

**Storage Buffer:**  
PBS only, pH7.3

For technical support and original validation data for this product please contact:

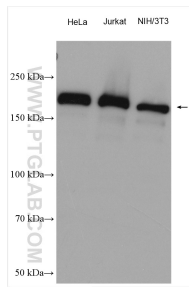
T: 4006900926

E: [Proteintech-CN@ptglab.com](mailto:Proteintech-CN@ptglab.com)

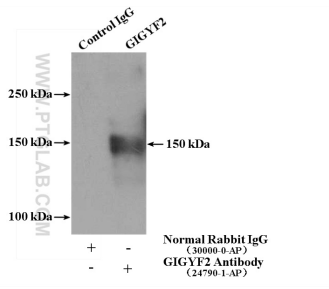
W: [ptgcn.com](http://ptgcn.com)

**This product is exclusively available under Proteintech Group brand and is not available to purchase from any other manufacturer.**

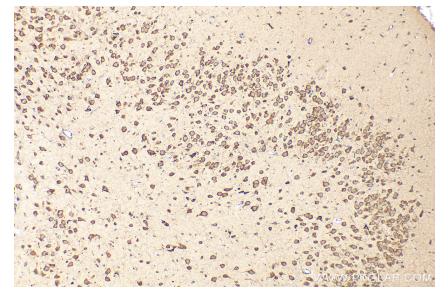
## Selected Validation Data



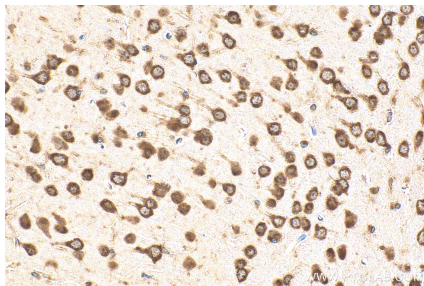
Various lysates were subjected to SDS PAGE followed by western blot with 24790-1-AP (GIGYF2 antibody) at dilution of 1:5000 incubated at room temperature for 1.5 hours. This data was developed using the same antibody clone with 24790-1-PBS in a different storage buffer formulation.



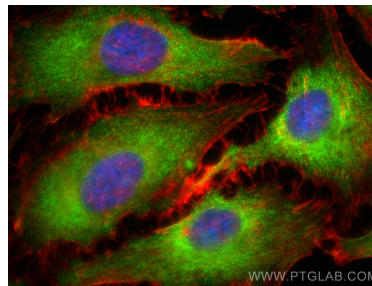
IP result of anti-GIGYF2 (IP:24790-1-AP, 4ug; Detection:24790-1-AP 1:2000) with Jurkat cells lysate 2000ug. This data was developed using the same antibody clone with 24790-1-PBS in a different storage buffer formulation.



Immunohistochemical analysis of paraffin-embedded rat brain tissue slide using 24790-1-AP (GIGYF2 antibody) at dilution of 1:200 (under 10x lens). Heat mediated antigen retrieval with Tris-EDTA buffer (pH 9.0). This data was developed using the same antibody clone with 24790-1-PBS in a different storage buffer formulation.



Immunohistochemical analysis of paraffin-embedded mouse brain tissue slide using 24790-1-AP (GIGYF2 antibody) at dilution of 1:200 (under 40x lens). Heat mediated antigen retrieval with Tris-EDTA buffer (pH 9.0). This data was developed using the same antibody clone with 24790-1-PBS in a different storage buffer formulation.



Immunofluorescent analysis of (-20°C Ethanol) fixed HeLa cells using GIGYF2 antibody (24790-1-AP) at dilution of 1:200 and CoraLite®488-Conjugated AffiniPure Goat Anti-Rabbit IgG(H+L) (SA00013-2), CL594-phalloidin (red). This data was developed using the same antibody clone with 24790-1-PBS in a different storage buffer formulation.