

For Research Use Only

PIK3C2B Polyclonal antibody

Catalog Number: 24788-1-AP **2 Publications**



Basic Information

Catalog Number:

24788-1-AP

Size:

450 µg/ml

Source:

Rabbit

Isotype:

IgG

Immunogen Catalog Number:

AG20474

GenBank Accession Number:

BC132876

GeneID (NCBI):

5287

UNIPROT ID:

O00750

Full Name:

phosphoinositide-3-kinase, class 2, beta polypeptide

Calculated MW:

1634 aa, 185 kDa

Observed MW:

160-185 kDa

Purification Method:

Antigen affinity purification

Recommended Dilutions:

WB 1:1000-1:6000

IP 0.5-4.0 µg for 1.0-3.0 mg of total protein lysate

IHC 1:100-1:400

IF 1:10-1:100

Applications

Tested Applications:

IF/ICC, IHC, IP, WB, ELISA

Cited Applications:

WB

Species Specificity:

human

Cited Species:

human

Note-IHC: suggested antigen retrieval with TE buffer pH 9.0; (*) Alternatively, antigen retrieval may be performed with citrate buffer pH 6.0

Positive Controls:

WB : HeLa cells, Jurkat cells

IP : HeLa cells,

IHC : human skeletal muscle tissue,

IF : HeLa cells,

Background Information

Notable Publications

Author	Pubmed ID	Journal	Application
Jiawen Lyu	29660285	Anal Chem	
Ru-Xu Sun	37436898	Cell Rep	WB

Storage

Storage:

Store at -20°C. Stable for one year after shipment.

Storage Buffer:

PBS with 0.02% sodium azide and 50% glycerol pH 7.3.

Aliquoting is unnecessary for -20°C storage

For technical support and original validation data for this product please contact:

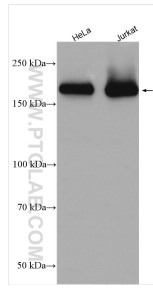
T: 4006900926

E: Proteintech-CN@ptglab.com

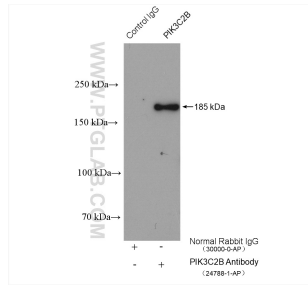
W: ptgcn.com

This product is exclusively available under Proteintech Group brand and is not available to purchase from any other manufacturer.

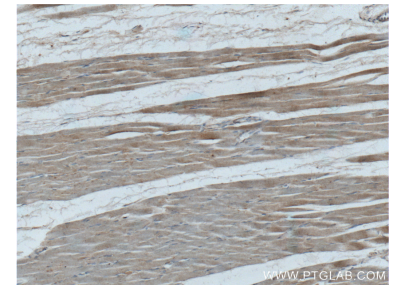
Selected Validation Data



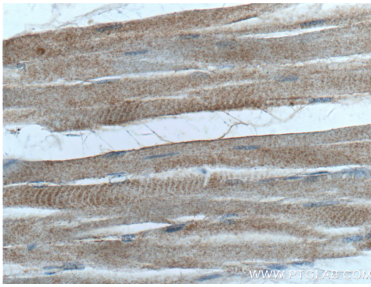
Various lysates were subjected to SDS PAGE followed by western blot with 24788-1-AP (PIK3C2B antibody) at dilution of 1:3000 incubated at room temperature for 1.5 hours.



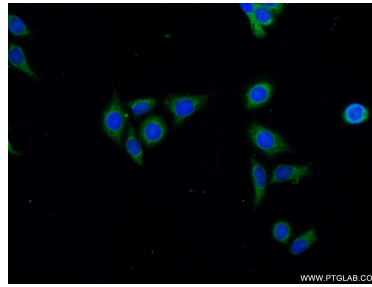
IP result of anti-PIK3C2B (IP:24788-1-AP, 4ug; Detection:24788-1-AP 1:1500) with HeLa cells lysate 1240 ug.



Immunohistochemical analysis of paraffin-embedded human skeletal muscle tissue slide using 24788-1-AP (PIK3C2B Antibody) at dilution of 1:200 (under 10x lens).



Immunohistochemical analysis of paraffin-embedded human skeletal muscle tissue slide using 24788-1-AP (PIK3C2B Antibody) at dilution of 1:200 (under 40x lens).



Immunofluorescent analysis of (-20°C Ethanol) fixed HeLa cells using 24788-1-AP (PIK3C2B antibody) at dilution of 1:25 and Alexa Fluor 488-conjugated AffiniPure Goat Anti-Rabbit IgG(H+L).