

For Research Use Only

# SLC36A1 Polyclonal antibody

Catalog Number: 24775-1-AP

Featured Product

5 Publications



## Basic Information

Catalog Number:

24775-1-AP

Size:

1000 ug/ml

Source:

Rabbit

Isotype:

IgG

Immunogen Catalog Number:

AG20594

GenBank Accession Number:

BC136437

GeneID (NCBI):

206358

UNIPROT ID:

Q7Z2H8

Full Name:

solute carrier family 36  
(proton/amino acid symporter),  
member 1

Calculated MW:

476 aa, 53 kDa

Observed MW:

43-53 kDa

Purification Method:

Antigen affinity purification

Recommended Dilutions:

WB 1:500-1:1000

IHC 1:50-1:500

## Applications

Tested Applications:

WB, IHC, ELISA

Cited Applications:

WB

Species Specificity:

human

Cited Species:

human, mouse

**Note-IHC: suggested antigen retrieval with  
TE buffer pH 9.0; (\*) Alternatively, antigen  
retrieval may be performed with citrate  
buffer pH 6.0**

Positive Controls:

WB : HeLa cells,

IHC : human small intestine tissue,

## Background Information

### Notable Publications

Author	Pubmed ID	Journal	Application
Kai Lu	31562534	J Gastroenterol	WB
Suli Lv	38599381	J Biol Chem	WB
Ludi Wang	38042221	Free Radic Biol Med	WB

## Storage

Storage:

Store at -20°C. Stable for one year after shipment.

Storage Buffer:

PBS with 0.02% sodium azide and 50% glycerol pH 7.3.

Aliquoting is unnecessary for -20°C storage

For technical support and original validation data for this product please contact:

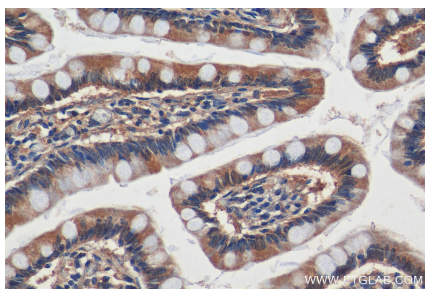
T: 4006900926

E: [Proteintech-CN@ptglab.com](mailto:Proteintech-CN@ptglab.com)

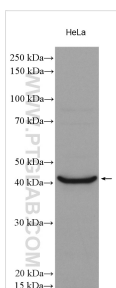
W: [ptgcn.com](http://ptgcn.com)

This product is exclusively available under Proteintech Group brand and is not available to purchase from any other manufacturer.

## Selected Validation Data



Immunohistochemical analysis of paraffin-embedded human small intestine tissue slide using 24775-1-AP (SLC36A1 antibody) at dilution of 1:200 (under 0x lens).



HeLa cells were subjected to SDS PAGE followed by western blot with 24775-1-AP (SLC36A1 antibody) at dilution of 1:600 incubated at room temperature for 1.5 hours.