

For Research Use Only

# MATCHF1 Polyclonal antibody

Catalog Number: 24771-1-AP



## Basic Information

<b>Catalog Number:</b> 24771-1-AP	<b>GenBank Accession Number:</b> BC153124	<b>Purification Method:</b> Antigen affinity purification
<b>Size:</b> 500 µg/ml	<b>GeneID (NCBI):</b> 55016	<b>Recommended Dilutions:</b> WB 1:1000-1:4000
<b>Source:</b> Rabbit	<b>UNIPROT ID:</b> Q8TCQ1	
<b>Isotype:</b> IgG	<b>Full Name:</b> membrane-associated ring finger (C3HC4) 1	
<b>Immunogen Catalog Number:</b> AG20231	<b>Calculated MW:</b> 289 aa, 32 kDa	
	<b>Observed MW:</b> 60 kDa	

## Applications

<b>Tested Applications:</b> WB, ELISA	<b>Positive Controls:</b> WB : mouse brain tissue, rat brain tissue
<b>Species Specificity:</b> human, mouse, rat	

## Background Information

MARCH1 is mainly found in secondary lymphoid organs, more specifically in the endocytic pathway of dendritic cells (DCs) and B cells (11-15). MARCH1 reduces the half-life of peptide/MHC II complexes by causing their redistribution from recycling endosomes to lysosomes. MARCH1 homodimerizes and also forms heterodimers with others family members (PMID: 22508929).

## Storage

**Storage:**  
Store at -20°C. Stable for one year after shipment.  
**Storage Buffer:**  
PBS with 0.02% sodium azide and 50% glycerol pH 7.3.  
Aliquoting is unnecessary for -20°C storage

For technical support and original validation data for this product please contact:

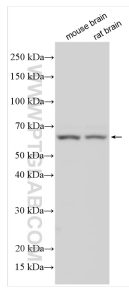
T: 4006900926

E: [Proteintech-CN@ptglab.com](mailto:Proteintech-CN@ptglab.com)

W: [ptgcn.com](http://ptgcn.com)

**This product is exclusively available under Proteintech Group brand and is not available to purchase from any other manufacturer.**

## Selected Validation Data



Various lysates were subjected to SDS PAGE followed by western blot with 24771-1-AP (MATCH1 antibody) at dilution of 1:2000 incubated at room temperature for 1.5 hours.