

For Research Use Only

INSIG2 Polyclonal antibody

Catalog Number: 24766-1-AP

Featured Product

16 Publications



Basic Information

Catalog Number:

24766-1-AP

Source:

Rabbit

Isotype:

IgG

Immunogen Catalog Number:

AG14072

GenBank Accession Number:

BC022475

GeneID (NCBI):

51141

UNIPROT ID:

Q9Y5U4

Full Name:

INSIG 2

Calculated MW:

225 aa, 25 kDa

Observed MW:

30 kDa

Purification Method:

Antigen affinity purification

Recommended Dilutions:

WB: 1:500-1:2000

IP: 0.5-4.0 ug for 1.0-3.0 mg of total protein lysate

IHC: 1:20-1:200

IF/ICC: 1:50-1:500

Applications

Tested Applications:

WB, IHC, IF/ICC, IP, ELISA

Cited Applications:

WB, IHC, IF, IP

Species Specificity:

human, mouse, rat

Cited Species:

human, mouse, rat, monkey

Note-IHC: suggested antigen retrieval with TE buffer pH 9.0; (*) Alternatively, antigen retrieval may be performed with citrate buffer pH 6.0

Positive Controls:

WB : rat liver tissue, A549 cells, SGC-7901 cells

IP : mouse liver tissue,

IHC : human liver tissue,

IF/ICC : HepG2 cells,

Background Information

INSIG2 mediates feedback control of cholesterol synthesis by controlling SCAP and HMGCR. INSIG2 may bring HMGCR into ubiquitin-mediated proteasomal degradation. Insig2 protein are endoplasmic reticulum proteins that block the processing of sterol regulatory element binding proteins (SREBPs) by binding to SREBP cleavage-activating protein (SCAP), and thus prevent SCAP from escorting SREBPs to the Golgi. INSIG-2 may play an important role in therapy of hypercholesterolemia.

Notable Publications

Author	Pubmed ID	Journal	Application
Pei-Ming Yang	31720078	Am J Cancer Res	WB
Han Zeng	34974159	Mol Metab	WB,IF
Yingchen Qian	36515824	Mol Biol Rep	IHC,WB

Storage

Storage:

Store at -20°C. Stable for one year after shipment.

Storage Buffer:

PBS with 0.02% sodium azide and 50% glycerol, pH7.3

Aliquoting is unnecessary for -20°C storage

For technical support and original validation data for this product please contact:

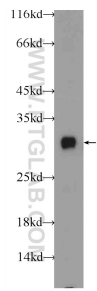
T: 4006900926

E: Proteintech-CN@ptglab.com

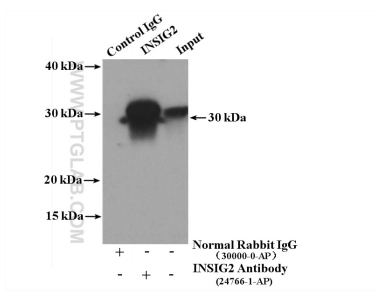
W: ptgcn.com

This product is exclusively available under Proteintech Group brand and is not available to purchase from any other manufacturer.

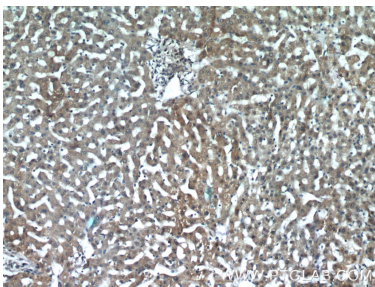
Selected Validation Data



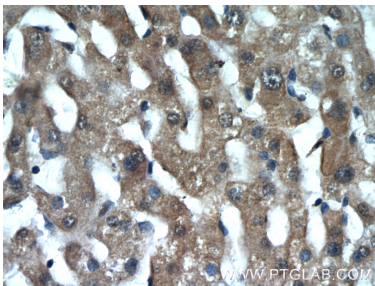
rat liver tissue were subjected to SDS PAGE followed by western blot with 24766-1-AP (INSIG2 Antibody) at dilution of 1:1000 incubated at room temperature for 1.5 hours.



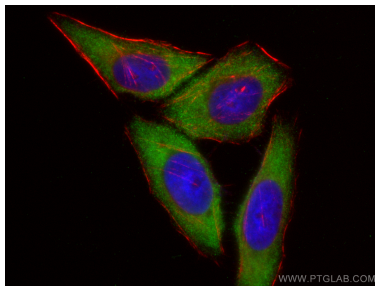
IP result of anti-INSIG2 (IP:24766-1-AP, 4ug; Detection:24766-1-AP 1:500) with mouse liver tissue lysate 3600ug.



Immunohistochemical analysis of paraffin-embedded human liver tissue slide using 24766-1-AP (INSIG2 Antibody) at dilution of 1:50 (under 10x lens).



Immunohistochemical analysis of paraffin-embedded human liver tissue slide using 24766-1-AP (INSIG2 Antibody) at dilution of 1:50 (under 40x lens).



Immunofluorescent analysis of (-20°C Ethanol) fixed HepG2 cells using INSIG2 antibody (24766-1-AP) at dilution of 1:200 and CoraLite®488-Conjugated AffiniPure Goat Anti-Rabbit IgG(H+L), CL594-phalloidin (red).