

For Research Use Only

# SMC4 Polyclonal antibody

Catalog Number: 24758-1-AP

Featured Product

5 Publications



## Basic Information

Catalog Number:

24758-1-AP

Size:

650 ug/ml

Source:

Rabbit

Isotype:

IgG

Immunogen Catalog Number:

AG19156

GenBank Accession Number:

BC106033

GeneID (NCBI):

10051

UNIPROT ID:

Q9NTJ3

Full Name:

structural maintenance of  
chromosomes 4

Calculated MW:

1288 aa, 147 kDa

Observed MW:

147-150 kDa

Purification Method:

Antigen affinity purification

Recommended Dilutions:

WB 1:1000-1:4000

IHC 1:200-1:1000

IF/ICC 1:400-1:1600

## Applications

Tested Applications:

WB, IHC, IF/ICC, ELISA

Cited Applications:

WB, IHC, IF

Species Specificity:

human

Cited Species:

human, mouse, rat

**Note-IHC: suggested antigen retrieval with  
TE buffer pH 9.0; (\*) Alternatively, antigen  
retrieval may be performed with citrate  
buffer pH 6.0**

Positive Controls:

WB : MCF-7 cells,

IHC : human colon tissue, human testis tissue

IF/ICC : HepG2 cells,

## Background Information

SMC4, also named as Structural maintenance of chromosomes protein 4, is a 1288 amino acid protein, which is widely expressed and belongs to the SMC family, SMC4 subfamily. SMC4 is a Central component of the condensin complex, a complex required for conversion of interphase chromatin into mitotic-like condense chromosomes. The calculated molecular weight of SMC4 is 147 kDa, but modified SMC4 is about 160 kDa.

## Notable Publications

Author	Pubmed ID	Journal	Application
Shouyu Xu	27613141	Gene	IHC
Johan Busselez	31076588	Sci Rep	
Ipek Ilgin Gönenc	35099000	Hum Mol Genet	WB

## Storage

Storage:

Store at -20°C. Stable for one year after shipment.

Storage Buffer:

PBS with 0.02% sodium azide and 50% glycerol pH 7.3.

Aliquoting is unnecessary for -20°C storage

For technical support and original validation data for this product please contact:

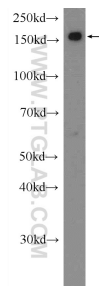
T: 4006900926

E: [Proteintech-CN@ptglab.com](mailto:Proteintech-CN@ptglab.com)

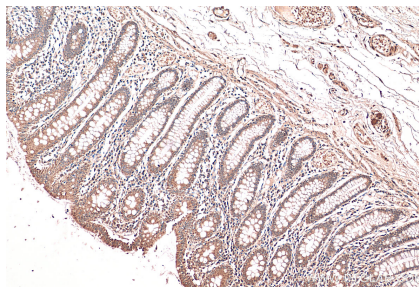
W: [ptgcn.com](http://ptgcn.com)

**This product is exclusively available under Proteintech Group brand and is not available to purchase from any other manufacturer.**

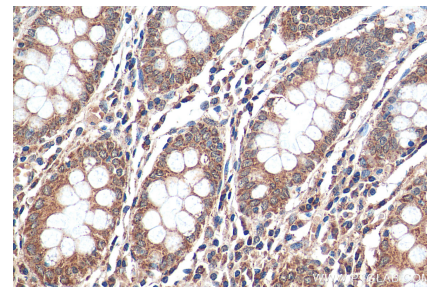
## Selected Validation Data



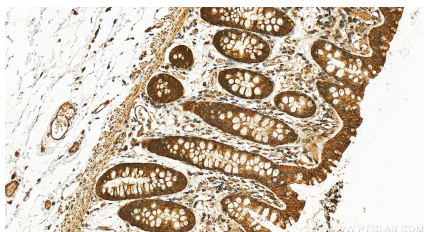
MCF-7 cells were subjected to SDS PAGE followed by western blot with 24758-1-AP (SMC4 Antibody) at dilution of 1:2000 incubated at room temperature for 1.5 hours.



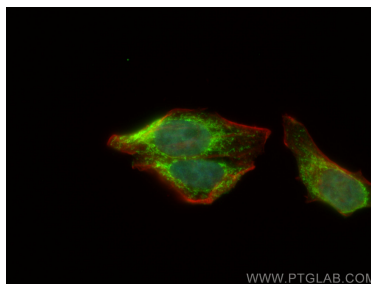
Immunohistochemical analysis of paraffin-embedded human colon tissue slide using 24758-1-AP (SMC4 antibody) at dilution of 1:200 (under 10x lens). Heat mediated antigen retrieval with Tris-EDTA buffer (pH 9.0).



Immunohistochemical analysis of paraffin-embedded human colon tissue slide using 24758-1-AP (SMC4 antibody) at dilution of 1:200 (under 40x lens). Heat mediated antigen retrieval with Tris-EDTA buffer (pH 9.0).



Immunohistochemical analysis of paraffin-embedded human normal colon slide using 24758-1-AP (SMC4 antibody) at dilution of 1:1000 (under 20x lens). Heat mediated antigen retrieval with Tris-EDTA buffer (pH 9.0).



Immunofluorescent analysis of (4% PFA) fixed HepG2 cells using SMC4 antibody (24758-1-AP) at dilution of 1:800 and CoraLite®488-Conjugated AffiniPure Goat Anti-Rabbit IgG(H+L) (SA00013-2).