

RPS6KL1 Polyclonal antibody

Catalog Number: 24757-1-AP

Basic Information

Catalog Number:

24757-1-AP

Size:

600 µg/ml

Source:

Rabbit

Isotype:

IgG

Immunogen Catalog Number:

AG15099

GenBank Accession Number:

BC004540

GeneID (NCBI):

83694

UNIPROT ID:

Q9Y6S9

Full Name:

ribosomal protein S6 kinase-like 1

Calculated MW:

549 aa, 60 kDa

Observed MW:

59 kDa

Purification Method:

Antigen affinity purification

Recommended Dilutions:

WB 1:500-1:1000

IHC 1:20-1:200

Applications

Tested Applications:

IHC, WB, ELISA

Species Specificity:

human, hamster

Note-IHC: suggested antigen retrieval with **TE buffer pH 9.0; (*)** Alternatively, antigen retrieval may be performed with **citrate buffer pH 6.0**

Positive Controls:

WB : CHO cells,

IHC : human testis tissue, human colon tissue

Background Information

Storage

Storage:

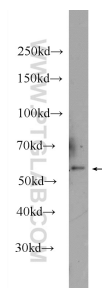
Store at -20°C. Stable for one year after shipment.

Storage Buffer:

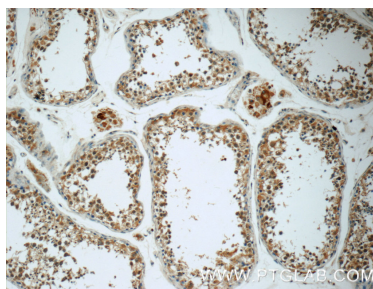
PBS with 0.02% sodium azide and 50% glycerol pH 7.3.

Aliquoting is unnecessary for -20°C storage

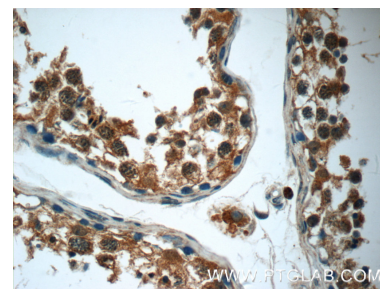
Selected Validation Data



CHO cells were subjected to SDS PAGE followed by western blot with 24757-1-AP (RPS6KL1 Antibody) at dilution of 1:600 incubated at room temperature for 1.5 hours.



Immunohistochemical analysis of paraffin-embedded human testis tissue slide using 24757-1-AP (RPS6KL1 Antibody) at dilution of 1:50 (under 10x lens).



Immunohistochemical analysis of paraffin-embedded human testis tissue slide using 24757-1-AP (RPS6KL1 Antibody) at dilution of 1:50 (under 40x lens).