

WWC2 Polyclonal antibody

Catalog Number: 24750-1-AP

2 Publications

Basic Information

Catalog Number:

24750-1-AP

Size:

900 µg/ml

Source:

Rabbit

Isotype:

IgG

Immunogen Catalog Number:

AG20479

GenBank Accession Number:

BC017957

GeneID (NCBI):

80014

UNIPROT ID:

Q6AWC2

Full Name:

WW and C2 domain containing 2

Calculated MW:

1192 aa, 134 kDa

Observed MW:

150 kDa

Purification Method:

Antigen affinity purification

Recommended Dilutions:

WB 1:1000-1:6000

IP 0.5-4.0 µg for 1.0-3.0 mg of total protein lysate

IHC 1:20-1:200

IF/ICC 1:20-1:200

Applications

Tested Applications:

IF/ICC, IHC, IP, WB, ELISA

Cited Applications:

WB

Species Specificity:

human, mouse

Cited Species:

human, mouse

Note-IHC: suggested antigen retrieval with TE buffer pH 9.0; (*) Alternatively, antigen retrieval may be performed with citrate buffer pH 6.0

Positive Controls:

WB : mouse brain tissue,

IP : HEK-293 cells,

IHC : human kidney tissue, human testis tissue

IF/ICC : HEK-293 cells,

Background Information

WWC2 also named as BOMB or WW and C2 domain containing 2 is 1192 amino acid protein, which contains 1 C2 domain and 2 WW domains. WWC2 localizes in cytoplasm and belongs to the WWC family. WWC2 exists as seven alternatively spliced isoforms and is encoded by a gene located on human chromosome 4q35.1. WWC2 may be expressed in liver, brain, prostate and kidney. The function of WWC2 is still non-known and need to be further studied.

Notable Publications

Author	Pubmed ID	Journal	Application
Feng Li	36484096	Nucleic Acids Res	WB
Hongmei Huang	38190957	Cell Signal	WB

Storage

Storage:

Store at -20°C. Stable for one year after shipment.

Storage Buffer:

PBS with 0.02% sodium azide and 50% glycerol pH 7.3.

Aliquoting is unnecessary for -20°C storage

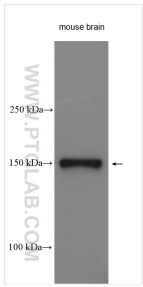
For technical support and original validation data for this product please contact:

T: 4006900926

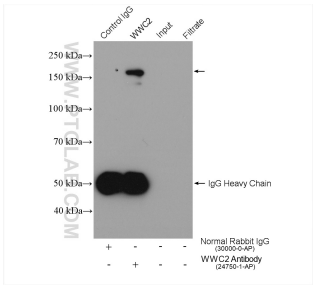
E: Proteintech-CN@ptglab.comW: ptgcn.com

This product is exclusively available under Proteintech Group brand and is not available to purchase from any other manufacturer.

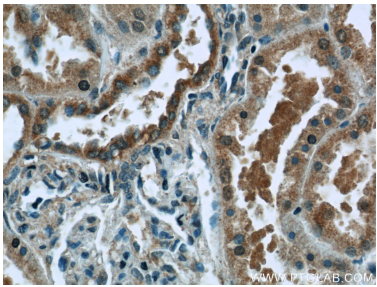
Selected Validation Data



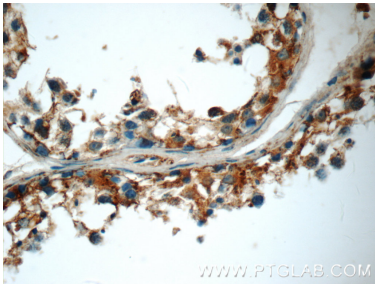
mouse brain tissue were subjected to SDS PAGE followed by western blot with 24750-1-AP (WWC2 antibody) at dilution of 1:3000 incubated at room temperature for 1.5 hours.



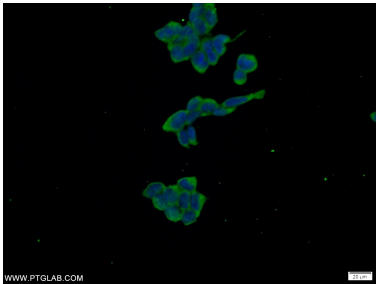
IP result of anti-WWC2 (IP:24750-1-AP, 4ug; Detection:24750-1-AP 1:500) with HEK-293 cells lysate 1360 ug.



Immunohistochemical analysis of paraffin-embedded human kidney tissue slide using 24750-1-AP (WWC2 Antibody) at dilution of 1:50 (under 40x lens).



Immunohistochemical analysis of paraffin-embedded human testis tissue slide using 24750-1-AP (WWC2 Antibody) at dilution of 1:50 (under 40x lens).



Immunofluorescent analysis of HEK-293 cells using 24750-1-AP (WWC2 antibody) at dilution of 1:50 and Alexa Fluor 488-conjugated AffiniPure Goat Anti-Rabbit IgG(H+L).