

For Research Use Only

YTHDF2 Polyclonal antibody

Catalog Number: 24744-1-AP

Featured Product

314 Publications



Basic Information

Catalog Number:

24744-1-AP

Concentration:

450 ug/ml

Source:

Rabbit

Isotype:

IgG

Immunogen Catalog Number:

AG5922

GenBank Accession Number:

BC002559

GeneID (NCBI):

51441

UNIPROT ID:

Q9Y5A9

Full Name:

YTH domain family, member 2

Calculated MW:

62 kDa

Observed MW:

62 kDa

Purification Method:

Antigen affinity purification

Recommended Dilutions:

WB 1:2000-1:12000

IP 0.5-4.0 ug for 1.0-3.0 mg of total protein lysate

IF-P 1:50-1:500

IF/ICC 1:50-1:500

Applications

Tested Applications:

WB, IF/ICC, IF-P, IP, ELISA

Cited Applications:

WB, IHC, IF, IP, CoIP, ChIP, RIP, CLIP

Species Specificity:

human, mouse, rat

Cited Species:

human, mouse, rat, pig, monkey, chicken, sheep, goat

Positive Controls:

WB : HEK-293 cells, Jurkat cells, HeLa cells, MOLT-4 cells, NIH/3T3 cells, C6 cells, Raji cells

IP : HeLa cells,

IF-P : mouse brain tissue,

IF/ICC : U2OS cells, HeLa cells, sodium arsenite treated HeLa cells

Background Information

YTHDF2 also named as CLL associated antigen KW 14 or HGRG8 is a 579 amino acid protein, which contains one YTH domain and exists as two alternatively spliced isoforms. YTHDF2 is expressed in in pancreas, testis and placenta. YTHDF2 may play a role in human longevity.

Notable Publications

Author	Pubmed ID	Journal	Application
Menghui Xu	36290677	Antioxidants (Basel)	WB
Fanpeng Zhao	34593014	Mol Neurodegener	WB
Kusuma Suphakhong	36183833	J Biol Chem	WB

Storage

Storage:

Store at -20°C. Stable for one year after shipment.

Storage Buffer:

PBS with 0.02% sodium azide and 50% glycerol, pH7.3

Aliquoting is unnecessary for -20°C storage

For technical support and original validation data for this product please contact:

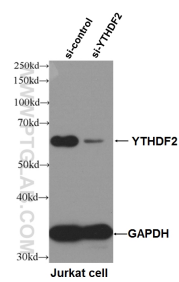
T: 4006900926

E: Proteintech-CN@ptglab.com

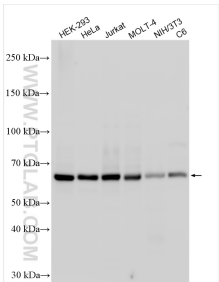
W: ptgcn.com

This product is exclusively available under Proteintech Group brand and is not available to purchase from any other manufacturer.

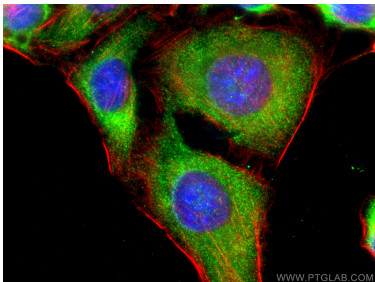
Selected Validation Data



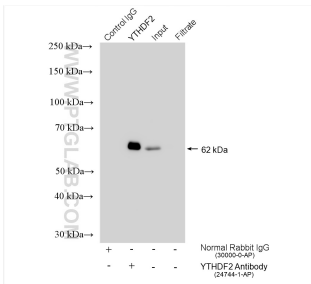
WB result of YTHDF2 antibody (24744-1-AP, 1:4000) with si-control and si-YTHDF2 transfected Jurkat cells..



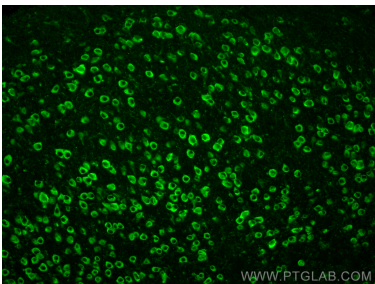
Various lysates were subjected to SDS PAGE followed by western blot with 24744-1-AP (YTHDF2 antibody) at dilution of 1:6000 incubated at room temperature for 1.5 hours.



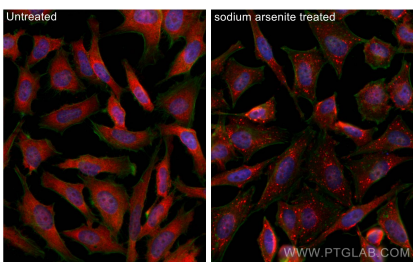
Immunofluorescent analysis of (-20°C Ethanol) fixed U2OS cells using YTHDF2 antibody (24744-1-AP) at dilution of 1:200 and CoraLite®488-Conjugated AffiniPure Goat Anti-Rabbit IgG(H+L), CL594-Phalloidin (red).



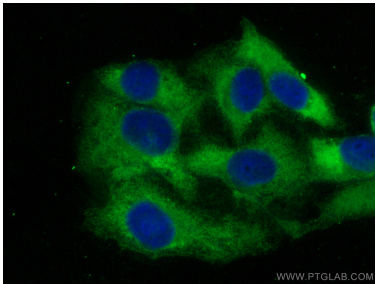
IP result of anti-YTHDF2 (IP:24744-1-AP, 4ug; Detection:24744-1-AP 1:6000) with HeLa cells lysate 1360 ug.



Immunofluorescent analysis of (4% PFA) fixed paraffin-embedded mouse brain tissue using YTHDF2 antibody (24744-1-AP) at dilution of 1:200 and Multi-rAb CoraLite ® Plus 488-Goat Anti-Rabbit Recombinant Secondary Antibody (H+L) (RGAR002). Heat mediated antigen retrieval with Tris-EDTA buffer (pH 9.0).



Immunofluorescent analysis of (4% PFA) fixed sodium arsenite treated HeLa cells using YTHDF2 antibody (24744-1-AP) at dilution of 1:400 and CoraLite®594-Conjugated Goat Anti-Rabbit IgG(H+L) (SA00013-4), CL488-phalloidin (green).



Immunofluorescent analysis of (-20°C Ethanol) fixed U2OS cells using YTHDF2 antibody (24744-1-AP) at dilution of 1:400 and CoraLite®488-Conjugated AffiniPure Goat Anti-Rabbit IgG(H+L).