

For Research Use Only

ILVBL Polyclonal antibody

Catalog Number: 24738-1-AP



Basic Information

Catalog Number: 24738-1-AP	GenBank Accession Number: BC011761	Purification Method: Antigen affinity purification
Size: 700 µg/ml	GeneID (NCBI): 10994	Recommended Dilutions: WB 1:500-1:2000 IHC 1:20-1:200
Source: Rabbit	UNIPROT ID: A1L0T0	
Isotype: IgG	Full Name: ilvB (bacterial acetolactate synthase)-like	
Immunogen Catalog Number: AG21495	Calculated MW: 68 kDa	
	Observed MW: 68 kDa	

Applications

Tested Applications: IHC, WB, ELISA	Positive Controls: WB : HepG2 cells, MCF-7 cells IHC : human heart tissue,
Species Specificity: human	
Note-IHC: suggested antigen retrieval with TE buffer pH 9.0; (*) Alternatively, antigen retrieval may be performed with citrate buffer pH 6.0	

Background Information

Storage

Storage:
Store at -20°C. Stable for one year after shipment.
Storage Buffer:
PBS with 0.02% sodium azide and 50% glycerol pH 7.3.
Aliquoting is unnecessary for -20°C storage

For technical support and original validation data for this product please contact:

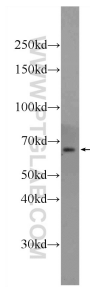
T: 4006900926

E: Proteintech-CN@ptglab.com

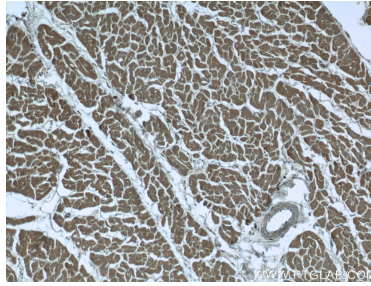
W: ptgcn.com

This product is exclusively available under Proteintech Group brand and is not available to purchase from any other manufacturer.

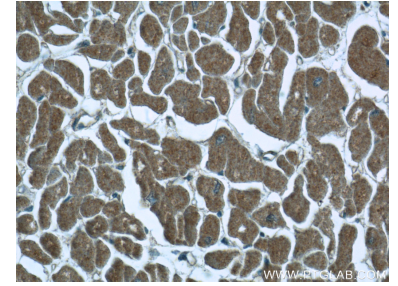
Selected Validation Data



HepG2 cells were subjected to SDS PAGE followed by western blot with 24738-1-AP (ILVBL Antibody) at dilution of 1:1000 incubated at room temperature for 1.5 hours.



Immunohistochemical analysis of paraffin-embedded human heart tissue slide using 24738-1-AP (ILVBL Antibody) at dilution of 1:100 (under 10x lens).



Immunohistochemical analysis of paraffin-embedded human heart tissue slide using 24738-1-AP (ILVBL Antibody) at dilution of 1:100 (under 40x lens).