

For Research Use Only

# RSBN1 Polyclonal antibody

Catalog Number: 24734-1-AP



## Basic Information

<b>Catalog Number:</b> 24734-1-AP	<b>GenBank Accession Number:</b> BC026155	<b>Purification Method:</b> Antigen affinity purification
<b>Source:</b> Rabbit	<b>GeneID (NCBI):</b> 54665	<b>Recommended Dilutions:</b> WB: 1:500-1:2000 IF/ICC: 1:200-1:800
<b>Isotype:</b> IgG	<b>UNIPROT ID:</b> Q5VWQ0	
<b>Immunogen Catalog Number:</b> AG20895	<b>Full Name:</b> round spermatid basic protein 1	
	<b>Calculated MW:</b> 411 aa, 46 kDa	
	<b>Observed MW:</b> 90 kDa	

## Applications

<b>Tested Applications:</b> WB, IF/ICC, ELISA	<b>Positive Controls:</b> WB : HeLa cells, Jurkat cells, PC-3 cells IF/ICC : HeLa cells, A431 cells
<b>Species Specificity:</b> human	

## Background Information

RSBN1 is expressed not only in the testes, but also in the brain and ovaries. RSBN1 could play a role in both meiotic and post-meiotic progression, suggesting that it may also be involved in oogenesis. On the other hand, RSBN1 may be involved in brain development and function, as well as the regulation of neuronal cells, since another H4K20 demethylase, PHF8, regulates neuronal cell survival and brain development, while LSD1 regulates memory formation (PMID: 20622853, 26214369, 34185806).

## Storage

**Storage:**  
Store at -20°C. Stable for one year after shipment.  
**Storage Buffer:**  
PBS with 0.02% sodium azide and 50% glycerol, pH7.3  
Aliquoting is unnecessary for -20°C storage

For technical support and original validation data for this product please contact:

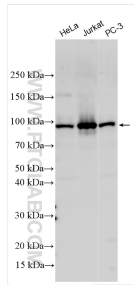
T: 4006900926

E: [Proteintech-CN@ptglab.com](mailto:Proteintech-CN@ptglab.com)

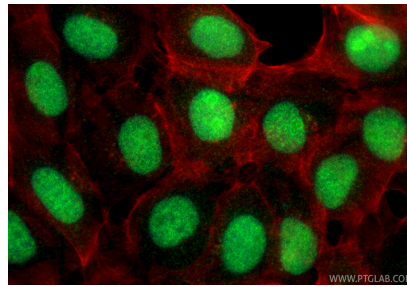
W: [ptgcn.com](http://ptgcn.com)

This product is exclusively available under Proteintech Group brand and is not available to purchase from any other manufacturer.

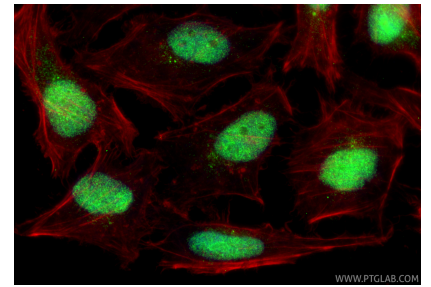
## Selected Validation Data



Various lysates were subjected to SDS PAGE followed by western blot with 24734-1-AP (RSBN1 antibody) at dilution of 1:1000 incubated at room temperature for 1.5 hours.



Immunofluorescent analysis of (4% PFA) fixed A431 cells using RSBN1 antibody (24734-1-AP) at dilution of 1:400 and CoraLite®488-Conjugated Goat Anti-Rabbit IgG(H+L) (SA00013-2), CL594-Phalloidin (red).



Immunofluorescent analysis of (4% PFA) fixed HeLa cells using RSBN1 antibody (24734-1-AP) at dilution of 1:400 and CoraLite®488-Conjugated Goat Anti-Rabbit IgG(H+L) (SA00013-2), CL594-Phalloidin (red).