

FAM172A Polyclonal antibody

Catalog Number: 24732-1-AP

Basic Information

Catalog Number:

24732-1-AP

Size:

700 µg/ml

Source:

Rabbit

Isotype:

IgG

Immunogen Catalog Number:

AG20437

GenBank Accession Number:

BC020584

GeneID (NCBI):

83989

UNIPROT ID:

Q8WUF8

Full Name:

family with sequence similarity 172, member A

Calculated MW:

416 aa, 48 kDa

Observed MW:

50-55 kDa

Purification Method:

Antigen affinity purification

Recommended Dilutions:

WB 1:1000-1:6000

IHC 1:50-1:500

Applications

Tested Applications:

IHC, WB, ELISA

Species Specificity:

human, mouse, rat

Note-IHC: suggested antigen retrieval with TE buffer pH 9.0; (*) Alternatively, antigen retrieval may be performed with citrate buffer pH 6.0

Positive Controls:

WB : mouse colon tissue, rat colon tissue

IHC : human liver tissue,

Background Information

Family with sequence similarity 172 member A (FAM172A), cloned from human aortic tissues, is subsequently observed in human endothelial and vascular smooth muscle cells, and macrophages. As the imbalance of the cell cycle and apoptosis is closely related to the key characteristics of malignant tumors, FAM172A dysregulation is a potential contributing factor in cell transformation. Recently, FAM172A has been reported to take part in the development of several cancers, such as human liver, colorectal and papillary thyroid cancers. Moreover, FAM172A was upregulated by high glucose in a concentration- and time-dependent manner which indicated that FAM172A may be involved in the pathogenesis of diabetic related diseases. FAM172A has 4 isoforms with the molecular mass of 34-36, 43 and 48 kDa. This antibody was detected at 50-55 kDa on SDS-PAGE. (PMID: 31988090, 26637224)

Storage

Storage:

Store at -20°C. Stable for one year after shipment.

Storage Buffer:

PBS with 0.02% sodium azide and 50% glycerol pH 7.3.

Aliquoting is unnecessary for -20°C storage

For technical support and original validation data for this product please contact:

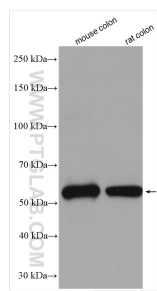
T: 4006900926

E: Proteintech-CN@ptglab.com

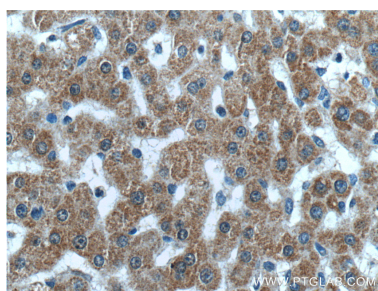
W: ptgcn.com

This product is exclusively available under Proteintech Group brand and is not available to purchase from any other manufacturer.

Selected Validation Data



Various lysates were subjected to SDS PAGE followed by western blot with 24732-1-AP (FAM172A antibody) at dilution of 1:3000 incubated at room temperature for 1.5 hours.



Immunohistochemical analysis of paraffin-embedded human liver tissue slide using 24732-1-AP (FAM172A Antibody) at dilution of 1:200 (under 40x lens).