

For Research Use Only

EFTUD1 Polyclonal antibody, PBS Only

Catalog Number: 24729-1-PBS



Basic Information

Catalog Number:

24729-1-PBS

Source:

Rabbit

Isotype:

IgG

Immunogen Catalog Number:

AG20371

GenBank Accession Number:

BC156743

GeneID (NCBI):

79631

UNIPROT ID:

Q7Z2Z2

Full Name:

elongation factor Tu GTP binding domain containing 1

Calculated MW:

1120 aa, 125 kDa

Observed MW:

125-135 kDa

Purification Method:

Antigen affinity purification

Applications

Tested Applications:

WB, IHC, Indirect ELISA

Species Specificity:

human, mouse, rat

Background Information

EFTUD1 (Elongation Factor Tu GTP Binding Domain Containing Protein 1) is a protein involved in ribosome biogenesis and translation activation. It is a member of the GTP-binding elongation factor family. EFTUD1 plays a crucial role in the release of eukaryotic translation initiation factor 6 (eIF6) from 60S ribosome subunits, allowing these subunits to join with 40S subunits to form actively translating 80S complexes. (PMID: 25015090)

Storage

Storage:

Store at -80°C.

The product is shipped with ice packs. Upon receipt, store it immediately at -80°C

Storage Buffer:

PBS only, pH7.3

For technical support and original validation data for this product please contact:

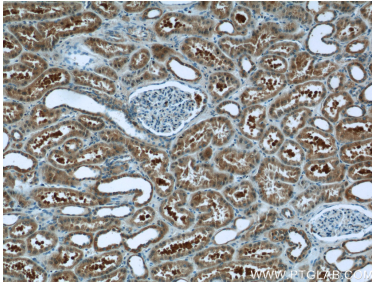
T: 4006900926

E: Proteintech-CN@ptglab.com

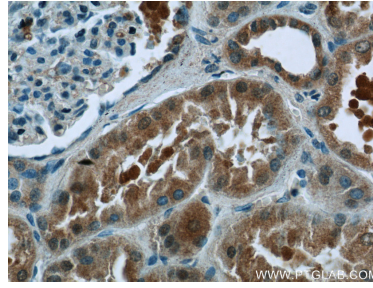
W: ptgcn.com

This product is exclusively available under Proteintech Group brand and is not available to purchase from any other manufacturer.

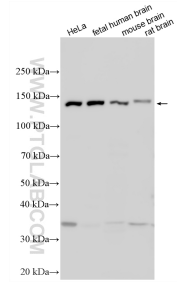
Selected Validation Data



Immunohistochemical analysis of paraffin-embedded human kidney tissue slide using 24729-1-AP (EFTUD1 Antibody) at dilution of 1:50 (under 10x lens). This data was developed using the same antibody clone with 24729-1-PBS in a different storage buffer formulation.



Immunohistochemical analysis of paraffin-embedded human kidney tissue slide using 24729-1-AP (EFTUD1 Antibody) at dilution of 1:50 (under 40x lens). This data was developed using the same antibody clone with 24729-1-PBS in a different storage buffer formulation.



Various lysates were subjected to SDS PAGE followed by western blot with 24729-1-AP (EFTUD1 antibody) at dilution of 1:4000 incubated at room temperature for 1.5 hours. This data was developed using the same antibody clone with 24729-1-PBS in a different storage buffer formulation.