

# CARD10 Polyclonal antibody

Catalog Number: 24726-1-AP

## Basic Information

**Catalog Number:**

24726-1-AP

**Size:**

450 µg/ml

**Source:**

Rabbit

**Isotype:**

IgG

**Immunogen Catalog Number:**

AG21600

**GenBank Accession Number:**

BC113659

**GeneID (NCBI):**

29775

**UNIPROT ID:**

Q9BWT7

**Full Name:**

caspase recruitment domain family,  
member 10

**Calculated MW:**

1032 aa, 116 kDa

**Purification Method:**

Antigen affinity purification

**Recommended Dilutions:**

IHC 1:50-1:500

## Applications

**Tested Applications:**

IHC, ELISA

**Species Specificity:**

human, mouse

**Note-IHC: suggested antigen retrieval with *TE buffer pH 9.0*; (\*) Alternatively, antigen retrieval may be performed with *citrate buffer pH 6.0***

**Positive Controls:**

IHC : mouse liver tissue,

## Background Information

### Storage

**Storage:**

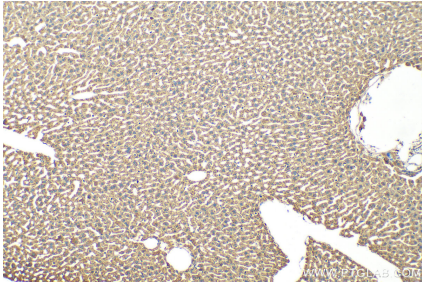
Store at -20°C. Stable for one year after shipment.

**Storage Buffer:**

PBS with 0.02% sodium azide and 50% glycerol pH 7.3.

Aliquoting is unnecessary for -20°C storage

## Selected Validation Data



Immunohistochemical analysis of paraffin-embedded mouse liver tissue slide using 24726-1-AP (CARD10 antibody) at dilution of 1:200 (under 10x lens). Heat mediated antigen retrieval with Tris-EDTA buffer (pH 9.0).