

For Research Use Only

# IL-36 Gamma Polyclonal antibody

Catalog Number: 24723-1-AP

Featured Product

2 Publications



## Basic Information

Catalog Number:

24723-1-AP

Size:

1200 µg/ml

Source:

Rabbit

Isotype:

IgG

Immunogen Catalog Number:

AG21489

GenBank Accession Number:

BC098337

GeneID (NCBI):

56300

UNIPROT ID:

Q9NZH8

Full Name:

interleukin 1 family, member 9

Calculated MW:

169 aa, 19 kDa

Purification Method:

Antigen affinity purification

Recommended Dilutions:

IHC 1:50-1:500

## Applications

Tested Applications:

IHC, ELISA

Cited Applications:

WB, IHC

Species Specificity:

human

Cited Species:

human

**Note-IHC: suggested antigen retrieval with TE buffer pH 9.0; (\*) Alternatively, antigen retrieval may be performed with citrate buffer pH 6.0**

Positive Controls:

IHC : human colon cancer tissue, human pancreas tissue, human ovary tumor tissue

## Background Information

IL-36 Gamma is a member of the interleukin 1 cytokine family. The activity of this cytokine is mediated by interleukin 1 receptor-like 2 (IL1RL2/IL1R-rp2), and is specifically inhibited by interleukin 1 family, member 5 (IL1F5/IL-1 delta). Interferon-gamma, tumor necrosis factor-alpha and interleukin 1, beta (IL1B) are reported to stimulate the expression of this cytokine in keratinocytes. The expression of this cytokine in keratinocytes can also be induced by a contact hypersensitivity reaction or herpes simplex virus infection.

## Notable Publications

Author	Pubmed ID	Journal	Application
Ozan Erdem	34289144	J Cutan Pathol	IHC
Graeme P Sullivan	36525507	Sci Immunol	WB

## Storage

Storage:

Store at -20°C. Stable for one year after shipment.

Storage Buffer:

PBS with 0.02% sodium azide and 50% glycerol pH 7.3.

Aliquoting is unnecessary for -20°C storage

For technical support and original validation data for this product please contact:

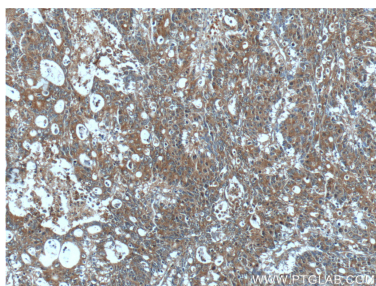
T: 4006900926

E: Proteintech-CN@ptglab.com

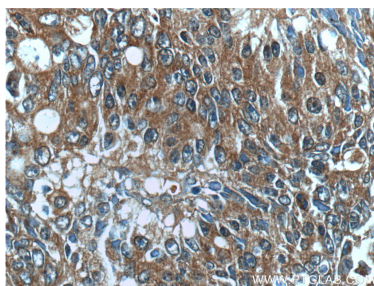
W: ptgcn.com

This product is exclusively available under Proteintech Group brand and is not available to purchase from any other manufacturer.

## Selected Validation Data



Immunohistochemical analysis of paraffin-embedded human colon cancer tissue slide using 24723-1-AP (IL36 gamma antibody at dilution of 1:200 (under 10x lens).



Immunohistochemical analysis of paraffin-embedded human colon cancer tissue slide using 24723-1-AP (IL36 gamma antibody at dilution of 1:200 (under 40x lens).