

For Research Use Only

# HELB Polyclonal antibody

Catalog Number: 24700-1-AP



## Basic Information

**Catalog Number:**

24700-1-AP

**Size:**

500 ug/ml

**Source:**

Rabbit

**Isotype:**

IgG

**Immunogen Catalog Number:**

AG20335

**GenBank Accession Number:**

BC157019

**GeneID (NCBI):**

92797

**UNIPROT ID:**

Q8NG08

**Full Name:**

helicase (DNA) B

**Calculated MW:**

1087 aa, 123 kDa

**Observed MW:**

120-140 kDa

**Purification Method:**

Antigen affinity purification

**Recommended Dilutions:**

WB 1:500-1:2000

IP 0.5-4.0 ug for 1.0-3.0 mg of total protein lysate

IF/ICC 1:600-1:2400

## Applications

**Tested Applications:**

WB, IF/ICC, IP, ELISA

**Species Specificity:**

human

**Positive Controls:**

WB : Jurkat cells, HEK-293 cells, HeLa cells

IP : HEK-293 cells,

IF/ICC : HeLa cells,

## Background Information

### Storage

**Storage:**

Store at -20°C. Stable for one year after shipment.

**Storage Buffer:**

PBS with 0.02% sodium azide and 50% glycerol pH 7.3.

Aliquoting is unnecessary for -20°C storage

For technical support and original validation data for this product please contact:

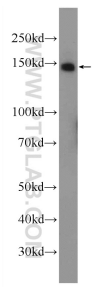
T: 4006900926

E: [Proteintech-CN@ptglab.com](mailto:Proteintech-CN@ptglab.com)

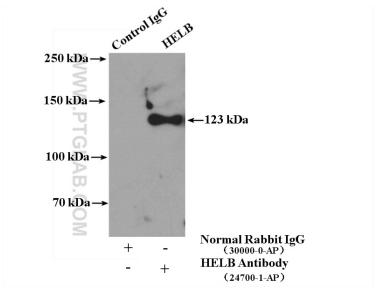
W: [ptgcn.com](http://ptgcn.com)

This product is exclusively available under Proteintech Group brand and is not available to purchase from any other manufacturer.

Selected Validation Data



Jurkat cells were subjected to SDS PAGE followed by western blot with 24700-1-AP (HELB Antibody) at dilution of 1:1000 incubated at room temperature for 1.5 hours.



IP result of anti-HELB (IP:24700-1-AP, 4ug; Detection:24700-1-AP 1:1000) with HEK-293 cells lysate 3000ug.

Immunofluorescent analysis of (4% PFA) fixed HeLa cells using HELB antibody (24700-1-AP) at dilution of 1:1200 and CoraLite®488-Conjugated Goat Anti-Rabbit IgG(H+L) (SA00013-2), CL594-phalloidin (red).