

For Research Use Only

# LPLUNC1 Polyclonal antibody, PBS Only

Catalog Number: 24699-1-PBS



## Basic Information

Catalog Number:

24699-1-PBS

Source:

Rabbit

Isotype:

IgG

Immunogen Catalog Number:

AG20056

GenBank Accession Number:

BC008429

GeneID (NCBI):

92747

UNIPROT ID:

Q8TDL5

Full Name:

chromosome 20 open reading frame  
114

Calculated MW:

484 aa, 52 kDa

Observed MW:

50 kDa

Purification Method:

Antigen affinity purification

## Applications

Tested Applications:

WB, ELISA

Species Specificity:

human

## Background Information

LPLUNC1 (Long Palate, Lung and Nasal Epithelium Carcinoma-Associated Protein 1) is a member of the PLUNC protein family and is a secretory protein primarily expressed in the mucosal epithelium of the respiratory tract. As a key component of innate immunity, LPLUNC1 exhibits antimicrobial activity by directly binding to lipopolysaccharides and inhibiting bacterial growth. Recent studies have revealed that LPLUNC1 expression is significantly downregulated in various tumors, including nasopharyngeal carcinoma and lung cancer. It exerts tumor-suppressive effects by regulating signaling pathways such as NF- $\kappa$ B and STAT3, thereby inhibiting tumor cell proliferation and promoting apoptosis. Its expression level is closely associated with tumor stage and prognosis, making it a potential diagnostic biomarker and therapeutic target for cancer.

## Storage

Storage:

Store at -80°C.

**The product is shipped with ice packs. Upon receipt, store it immediately at -80°C**

Storage Buffer:

PBS only, pH7.3

For technical support and original validation data for this product please contact:

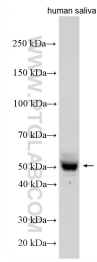
T: 4006900926

E: [Proteintech-CN@ptglab.com](mailto:Proteintech-CN@ptglab.com)

W: [ptgcn.com](http://ptgcn.com)

**This product is exclusively available under Proteintech Group brand and is not available to purchase from any other manufacturer.**

## Selected Validation Data



Various lysates were subjected to SDS PAGE followed by western blot with 24699-1-AP (LPLUNC1 antibody) at dilution of 1:5000 incubated at room temperature for 1.5 hours. This data was developed using the same antibody clone with 24699-1-PBS in a different storage buffer formulation.