

For Research Use Only

CCDC99 Polyclonal antibody

Catalog Number: 24689-1-AP

Featured Product

2 Publications



Basic Information

Catalog Number:

24689-1-AP

Concentration:

600 µg/ml

Source:

Rabbit

Isotype:

IgG

Immunogen Catalog Number:

AG20430

GenBank Accession Number:

BC012568

GeneID (NCBI):

54908

UNIPROT ID:

Q96EA4

Full Name:

coiled-coil domain containing 99

Calculated MW:

605 aa, 70 kDa

Observed MW:

70 kDa

Purification Method:

Antigen affinity purification

Recommended Dilutions:

WB 1:1000-1:4000

IP 0.5-4.0 µg for 1.0-3.0 mg of total protein lysate

IHC 1:50-1:500

Applications

Tested Applications:

WB, IP, IHC, ELISA

Cited Applications:

WB, IF

Species Specificity:

human

Cited Species:

human

Note-IHC: suggested antigen retrieval with TE buffer pH 9.0; (*) Alternatively, antigen retrieval may be performed with citrate buffer pH 6.0

Positive Controls:

WB : HEK-293 cells, HeLa cells, HEK293 cells

IP : HEK-293 cells,

IHC : human liver cancer tissue,

Background Information

Notable Publications

Author	Pubmed ID	Journal	Application
Sanna Abbasi	33799447	Cells	WB, IF
Tao Liu	39196978	PLoS One	WB

Storage

Storage:

Store at -20°C. Stable for one year after shipment.

Storage Buffer:

PBS with 0.02% sodium azide and 50% glycerol, pH7.3

Aliquoting is unnecessary for -20°C storage

For technical support and original validation data for this product please contact:

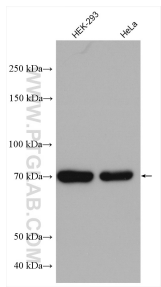
T: 4006900926

E: Proteintech-CN@ptglab.com

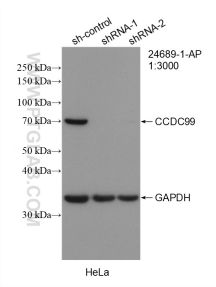
W: ptgcn.com

This product is exclusively available under Proteintech Group brand and is not available to purchase from any other manufacturer.

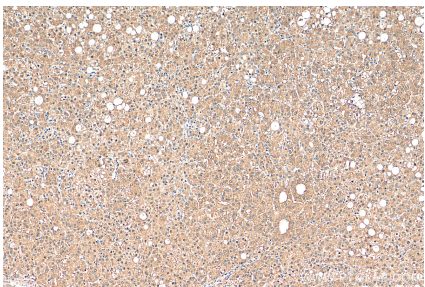
Selected Validation Data



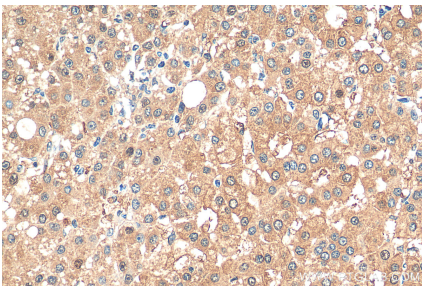
Various lysates were subjected to SDS PAGE followed by western blot with 24689-1-AP (CCDC99 antibody) at dilution of 1:2000 incubated at room temperature for 1.5 hours.



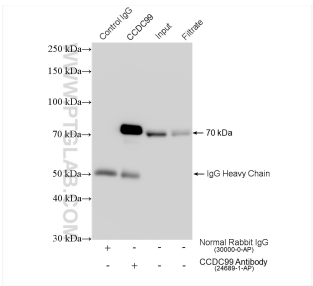
WB result of CCDC99 antibody (24689-1-AP; 1:3000; incubated at room temperature for 1.5 hours) with sh-Control and sh-CCDC99 transfected HeLa cells.



Immunohistochemical analysis of paraffin-embedded human liver cancer tissue slide using 24689-1-AP (CCDC99 antibody) at dilution of 1:200 (under 10x lens). Heat mediated antigen retrieval with Tris-EDTA buffer (pH 9.0).



Immunohistochemical analysis of paraffin-embedded human liver cancer tissue slide using 24689-1-AP (CCDC99 antibody) at dilution of 1:200 (under 40x lens). Heat mediated antigen retrieval with Tris-EDTA buffer (pH 9.0).



IP result of anti-CCDC99 (IP:24689-1-AP, 4ug; Detection:24689-1-AP 1:2000) with HEK-293 cells lysate 1400 ug.