

For Research Use Only

# PRY Polyclonal antibody

Catalog Number: 24688-1-AP



## Basic Information

<b>Catalog Number:</b> 24688-1-AP	<b>GenBank Accession Number:</b> BC153128	<b>Purification Method:</b> Antigen affinity purification
<b>Size:</b> 650 µg/ml	<b>GeneID (NCBI):</b> 442862	<b>Recommended Dilutions:</b> WB 1:500-1:2000
<b>Source:</b> Rabbit	<b>UNIPROT ID:</b> O14603	IHC 1:50-1:500
<b>Isotype:</b> IgG	<b>Full Name:</b> PTPN13-like, Y-linked 2	IF 1:10-1:100
<b>Immunogen Catalog Number:</b> AG20232	<b>Calculated MW:</b> 147 aa, 17 kDa	

## Applications

<b>Tested Applications:</b> IF/ICC, IHC, WB, ELISA	<b>Positive Controls:</b> WB : PC-3 cells, IHC : human prostate cancer tissue, IF : HepG2 cells,
<b>Species Specificity:</b> human	
<b>Note-IHC: suggested antigen retrieval with TE buffer pH 9.0; (*) Alternatively, antigen retrieval may be performed with citrate buffer pH 6.0</b>	

## Background Information

PRY is Testis-specific PTP-BL-related Y protein which has two isoforms with MW 16 and 6-8 kDa.

## Storage

**Storage:**  
Store at -20°C. Stable for one year after shipment.  
**Storage Buffer:**  
PBS with 0.02% sodium azide and 50% glycerol pH 7.3.  
Aliquoting is unnecessary for -20°C storage

For technical support and original validation data for this product please contact:

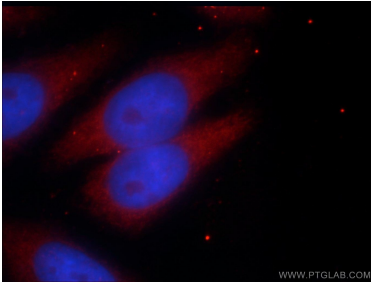
T: 4006900926

E: Proteintech-CN@ptglab.com

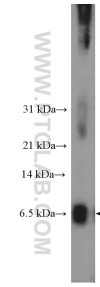
W: ptgcn.com

This product is exclusively available under Proteintech Group brand and is not available to purchase from any other manufacturer.

## Selected Validation Data



Immunofluorescent analysis of HepG2 cells using 24688-1-AP (PRY antibody) at dilution of 1:25 and Rhodamine-Goat anti-Rabbit IgG.



PC-3 cells were subjected to SDS PAGE followed by western blot with 24688-1-AP (PRY antibody at dilution of 1:1000 incubated at room temperature for 1.5 hours.