

# AMMECR1 Polyclonal antibody

Catalog Number: 24687-1-AP

## Basic Information

|   |  |  |
|---|--|--|
| <b>Catalog Number:</b><br>24687-1-AP        | <b>GenBank Accession Number:</b><br>BC060813   | <b>Purification Method:</b><br>Antigen affinity purification       |
| <b>Size:</b><br>800 µg/ml                   | <b>GeneID (NCBI):</b><br>9949  | <b>Recommended Dilutions:</b><br>WB 1:500-1:1000<br>IHC 1:50-1:500 |
| <b>Source:</b><br>Rabbit                    | <b>UNIPROT ID:</b><br>Q9Y4X0   |  |
| <b>Isotype:</b><br>IgG                      | <b>Full Name:</b><br>Alport syndrome, mental retardation,<br>midface hypoplasia and<br>elliptocytosis chromosomal region<br>gene 1 |  |
| <b>Immunogen Catalog Number:</b><br>AG16977 | <b>Calculated MW:</b><br>330 aa, 35 kDa  |  |
|   | <b>Observed MW:</b><br>45 kDa  |  |

## Applications

|  |   |
|--|---|
| <b>Tested Applications:</b><br>IHC, WB, ELISA  | <b>Positive Controls:</b>   |
| <b>Species Specificity:</b><br>human, mouse  | <b>WB:</b> Jurkat cells, mouse liver tissue, mouse uterus<br>tissue |
| <b>Note-IHC:</b> suggested antigen retrieval<br>with <b>TE buffer pH 9.0</b> ; (*) Alternatively,<br>antigen retrieval may be performed<br>with <b>citrate buffer pH 6.0</b> | <b>IHC:</b> mouse cerebellum tissue,                                |

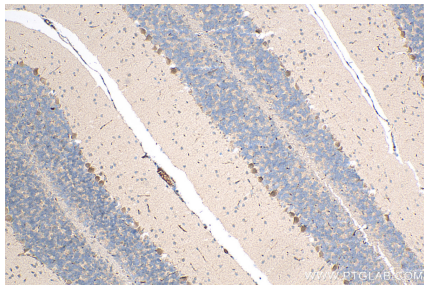
## Background Information

AMMECR1 also named as AMME syndrome candidate gene 1 protein is a 333 amino acid protein, which contains 1 AMMECR1 domain. Containing a glycine-rich N terminus, the AMMECR1 protein exhibits putative nuclear localization and a substantial level of instability, suggesting it plays a role in regulation. The deletion of AMMECR1 gene may be involved in glomerulonephritis, sensorineural hearing loss, mental retardation, midface hypoplasia and elliptocytosis.

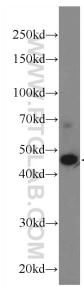
## Storage

**Storage:**  
Store at -20°C. Stable for one year after shipment.  
**Storage Buffer:**  
PBS with 0.02% sodium azide and 50% glycerol pH 7.3.  
Aliquoting is unnecessary for -20°C storage

## Selected Validation Data



Immunohistochemical analysis of paraffin-embedded mouse cerebellum tissue slide using 24687-1-AP (AMMECR1 antibody) at dilution of 1:200 (under 10x lens). Heat mediated antigen retrieval with Tris-EDTA buffer (pH 9.0).



Jurkat cells were subjected to SDS PAGE followed by western blot with 24687-1-AP (AMMECR1 Antibody) at dilution of 1:600 incubated at room temperature for 1.5 hours.