

For Research Use Only

LRPAP1 Polyclonal antibody

Catalog Number: 24662-1-AP **1 Publications**



Basic Information

Catalog Number:

24662-1-AP

Size:

800 µg/ml

Source:

Rabbit

Isotype:

IgG

Immunogen Catalog Number:

AG20304

GenBank Accession Number:

BC112067

GeneID (NCBI):

4043

UNIPROT ID:

P30533

Full Name:

low density lipoprotein receptor-related protein associated protein 1

Calculated MW:

357 aa, 41 kDa

Observed MW:

39-40 kDa

Purification Method:

Antigen affinity purification

Recommended Dilutions:

WB 1:2000-1:10000

IHC 1:500-1:2000

Applications

Tested Applications:

FC, IHC, WB, ELISA

Cited Applications:

WB

Species Specificity:

human

Cited Species:

human

Note-IHC: suggested antigen retrieval with TE buffer pH 9.0; (*) Alternatively, antigen retrieval may be performed with citrate buffer pH 6.0

Positive Controls:

WB : HeLa cells, MDA-MB-231 cells

IHC : human kidney tissue, human testis tissue

Background Information

Notable Publications

Author	Pubmed ID	Journal	Application
Jie You	34469777	Stem Cell Res	WB

Storage

Storage:

Store at -20°C. Stable for one year after shipment.

Storage Buffer:

PBS with 0.02% sodium azide and 50% glycerol pH 7.3.

Aliquoting is unnecessary for -20°C storage

For technical support and original validation data for this product please contact:

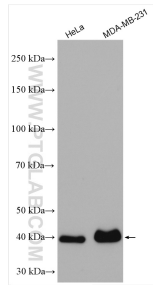
T: 4006900926

E: Proteintech-CN@ptglab.com

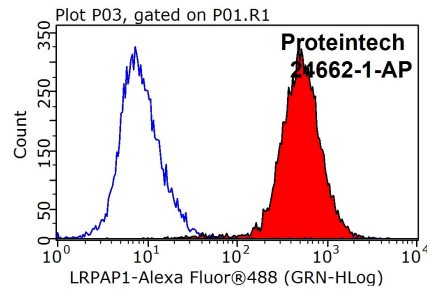
W: ptgcn.com

This product is exclusively available under Proteintech Group brand and is not available to purchase from any other manufacturer.

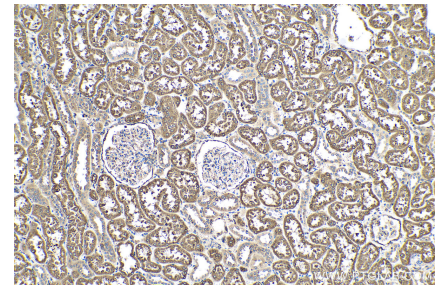
Selected Validation Data



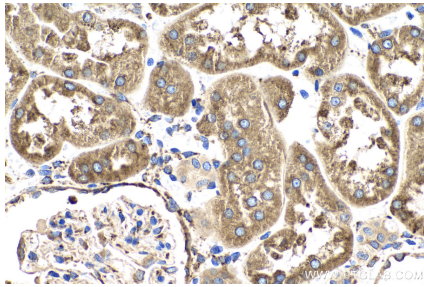
Various lysates were subjected to SDS PAGE followed by western blot with 24662-1-AP (LRPAP1 antibody) at dilution of 1:5000 incubated at room temperature for 1.5 hours.



1x10⁶ HeLa cells were stained with 0.2ug LRPAP1 antibody (24662-1-AP, red) and control antibody (blue). Fixed with 90% MeOH blocked with 3% BSA (30 min). Alexa Fluor 488-conjugated AffiniPure Goat Anti-Rabbit IgG(H+L) with dilution 1:1000.



Immunohistochemical analysis of paraffin-embedded human kidney tissue slide using 24662-1-AP (LRPAP1 antibody) at dilution of 1:1000 (under 10x lens). Heat mediated antigen retrieval with Tris-EDTA buffer (pH 9.0).



Immunohistochemical analysis of paraffin-embedded human kidney tissue slide using 24662-1-AP (LRPAP1 antibody) at dilution of 1:1000 (under 40x lens). Heat mediated antigen retrieval with Tris-EDTA buffer (pH 9.0).