

For Research Use Only

# OPN1SW Polyclonal antibody, PBS Only

Catalog Number: 24660-1-PBS



## Basic Information

Catalog Number:

24660-1-PBS

Source:

Rabbit

Isotype:

IgG

Immunogen Catalog Number:

AG20387

GenBank Accession Number:

BC156719

GeneID (NCBI):

611

UNIPROT ID:

P03999

Full Name:

opsin 1 (cone pigments), short-wave-sensitive

Calculated MW:

348 aa, 39 kDa

Purification Method:

Antigen affinity purification

## Applications

Tested Applications:

IHC, IF-P, Indirect ELISA

Species Specificity:

human, mouse, rat

## Background Information

OPN1SW (Short-wave-sensitive opsin 1) belongs to the G-protein coupled receptor 1 family, opsin subfamily. It's one of three types of cone photoreceptors responsible for normal color vision. Inherited tritan color vision deficiencies exhibit an autosomal dominant inheritance pattern and are caused by mutations in OPN1SW (PMID: 32400513).

## Storage

Storage:

Store at -80°C.

**The product is shipped with ice packs. Upon receipt, store it immediately at -80°C**

Storage Buffer:

PBS only, pH7.3

For technical support and original validation data for this product please contact:

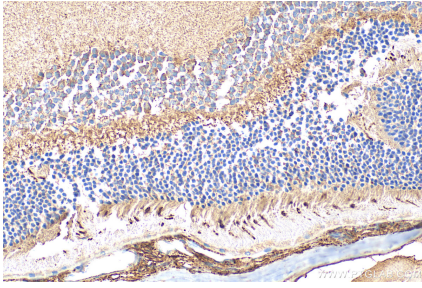
T: 4006900926

E: [Proteintech-CN@ptglab.com](mailto:Proteintech-CN@ptglab.com)

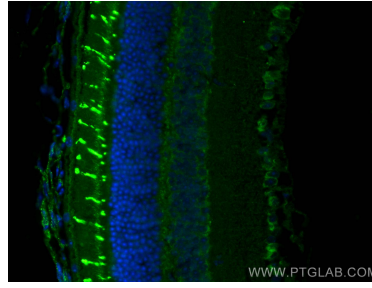
W: [ptgcn.com](http://ptgcn.com)

**This product is exclusively available under Proteintech Group brand and is not available to purchase from any other manufacturer.**

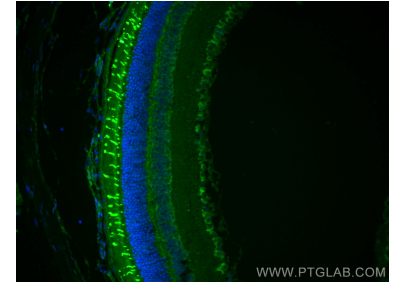
## Selected Validation Data



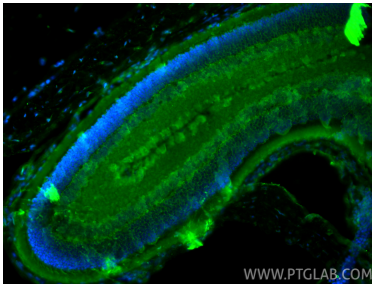
Immunohistochemical analysis of paraffin-embedded mouse eye tissue slide using 24660-1-AP (OPN1SW antibody) at dilution of 1:200 (under 40x lens). Heat mediated antigen retrieval with Tris-EDTA buffer (pH 9.0). This data was developed using the same antibody clone with 24660-1-PBS in a different storage buffer formulation.



Immunofluorescent analysis of (4% PFA) fixed mouse eye tissue using OPN1SW antibody (24660-1-AP) at dilution of 1:200 and CoraLite®488-Conjugated AffiniPure Goat Anti-Rabbit IgG(H+L). This data was developed using the same antibody clone with 24660-1-PBS in a different storage buffer formulation.



Immunofluorescent analysis of (4% PFA) fixed mouse eye tissue using OPN1SW antibody (24660-1-AP) at dilution of 1:200 and CoraLite®488-Conjugated AffiniPure Goat Anti-Rabbit IgG(H+L). This data was developed using the same antibody clone with 24660-1-PBS in a different storage buffer formulation.



Immunofluorescent analysis of (4% PFA) fixed paraffin-embedded rat eye tissue using OPN1SW antibody (24660-1-AP) at dilution of 1:400 and CoraLite®488-Conjugated Goat Anti-Rabbit IgG(H+L) (SA00013-2). Heat mediated antigen retrieval with Tris-EDTA buffer (pH 9.0). This data was developed using the same antibody clone with 24660-1-PBS in a different storage buffer formulation.